

For Research Use Only

# SAT1 Monoclonal antibody

Catalog Number: 68928-1-Ig



## Basic Information

Catalog Number:

68928-1-Ig

Size:

1000 ug/ml

Source:

Mouse

Isotype:

IgG2a

Immunogen Catalog Number:

AG33644

GenBank Accession Number:

BC008424

GeneID (NCBI):

6303

UNIPROT ID:

P21673

Full Name:

spermidine/spermine N1-acetyltransferase 1

Calculated MW:

20 kDa

Observed MW:

15-25 kDa

Purification Method:

Protein A purification

CloneNo.:

1F3E4

Recommended Dilutions:

WB 1:5000-1:50000

## Applications

Tested Applications:

WB, ELISA

Species Specificity:

human

Positive Controls:

WB : HEK-293 cells,

## Background Information

### Storage

Storage:

Store at -20°C. Stable for one year after shipment.

Storage Buffer:

PBS with 0.02% sodium azide and 50% glycerol pH 7.3.

Aliquoting is unnecessary for -20°C storage

For technical support and original validation data for this product please contact:

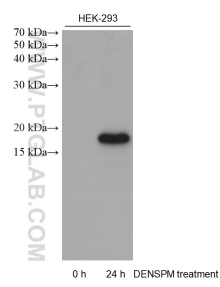
T: 4006900926

E: [Proteintech-CN@ptglab.com](mailto:Proteintech-CN@ptglab.com)

W: [ptgcn.com](http://ptgcn.com)

This product is exclusively available under Proteintech Group brand and is not available to purchase from any other manufacturer.

## Selected Validation Data



Untreated and DENS PM treated HEK-293 cells were subjected to SDS PAGE followed by western blot with 68928-1-Ig (SAT1 antibody) at dilution of 1:10000 incubated at room temperature for 1.5 hours.