

For Research Use Only

NDEL1 Monoclonal antibody

Catalog Number: 68954-1-Ig



Basic Information

Catalog Number: 68954-1-Ig	GenBank Accession Number: BC026101	Purification Method: Protein A purification
Size: 1000 µg/ml	GeneID (NCBI): 81565	CloneNo.: 1B3E9
Source: Mouse	UNIPROT ID: Q9GZM8	Recommended Dilutions: WB 1:5000-1:50000
Isotype: IgG2b	Full Name: nudE nuclear distribution gene E homolog (A. nidulans)-like 1	
Immunogen Catalog Number: AG11197	Calculated MW: 345 aa, 38 kDa, 41 kDa	
	Observed MW: 38-42 kDa	

Applications

Tested Applications:
WB, ELISA

Species Specificity:
human, mouse, rat, pig

Positive Controls:
WB: LNCaP cells, HeLa cells, HEK-293 cells, HepG2 cells, Jurkat cells, K-562 cells, HSC-T6 cells, NIH/3T3 cells, pig brain tissue

Background Information

Nuclear distribution factor E-homolog 1 (NDE1), NDE-like 1 (NDEL1), and Lissencephaly 1 (LIS1) together involve in essential neurodevelopmental processes, including neuronal precursor proliferation and differentiation, neurite outgrowth, and neuronal migration. All three bind directly to Disrupted in Schizophrenia 1 (DISC1), a scaffold protein critical to neuronal proliferation, integration, migration, and synaptic function within the developing and adult brain.[PMID: 18469341] Nuclear distribution element-like 1 (NDEL1) was firstly identified as a regulator of the cytoskeleton in microtubule and intermediate filament dynamics and microtubule-based transport [PMID:21948775]. It is required for organization of the cellular microtubule array and microtubule anchoring at the centrosome, which is in part by targeting the microtubule severing protein KATNA1 to the centrosome[PMID:15728732].

Storage

Storage:
Store at -20°C. Stable for one year after shipment.

Storage Buffer:
PBS with 0.02% sodium azide and 50% glycerol pH 7.3.

Aliquoting is unnecessary for -20°C storage

For technical support and original validation data for this product please contact:

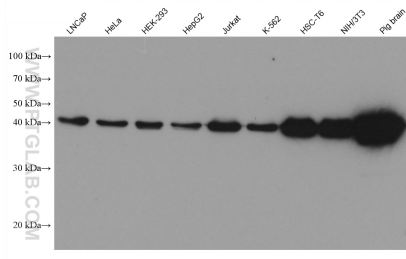
T: 4006900926

E: Proteintech-CN@ptglab.com

W: ptgcn.com

This product is exclusively available under Proteintech Group brand and is not available to purchase from any other manufacturer.

Selected Validation Data



Various lysates were subjected to SDS PAGE followed by western blot with 68954-1-Ig (NDEL1 antibody) at dilution of 1:20000 incubated at room temperature for 1.5 hours.