

For Research Use Only

PAX8 Monoclonal antibody, PBS Only (Detector)

Catalog Number: 68979-1-PBS



Basic Information

Catalog Number: 68979-1-PBS	GenBank Accession Number: BC001060	Purification Method: Protein G purification
Source: Mouse	GeneID (NCBI): 7849	CloneNo.: 1F4C3
Isotype: IgG1	UNIPROT ID: Q06710	
Immunogen Catalog Number: AG16019	Full Name: paired box 8	
	Calculated MW: 450 aa, 48 kDa	

Applications

Tested Applications:
Cytometric bead array, Indirect ELISA

Species Specificity:
human

Background Information

Storage

Storage:
Store at -80°C.
The product is shipped with ice packs. Upon receipt, store it immediately at -80°C

Storage Buffer:
PBS only, pH7.3

For technical support and original validation data for this product please contact:

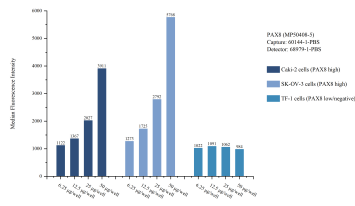
T: 4006900926

E: Proteintech-CN@ptglab.com

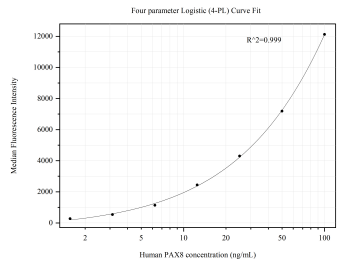
W: ptgcn.com

This product is exclusively available under Proteintech Group brand and is not available to purchase from any other manufacturer.

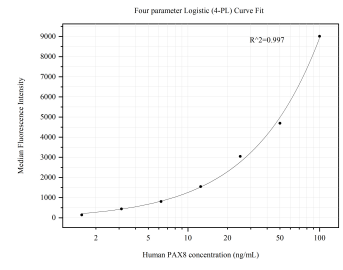
Selected Validation Data



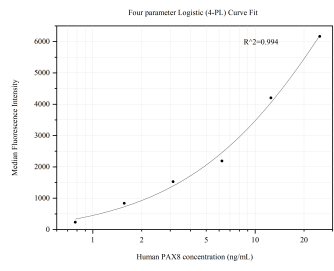
Cytometric bead array sample test of MP50408-5, PAX8 Monoclonal Matched Antibody Pair, PBS Only. Capture antibody: 60144-1-PBS. Detection antibody: 68979-1-PBS.



Cytometric bead array standard curve of MP50408-3, PAX8 Monoclonal Matched Antibody Pair, PBS Only. Capture antibody: 60144-2-PBS. Detection antibody: 68979-1-PBS. Standard:Ag0306. Range: 1.563-100 ng/mL



Cytometric bead array standard curve of MP50408-5, PAX8 Monoclonal Matched Antibody Pair, PBS Only. Capture antibody: 60144-1-PBS. Detection antibody: 68979-1-PBS. Standard:Ag0306. Range: 1.563-100 ng/mL



Cytometric bead array standard curve of MP50408-6, PAX8 Monoclonal Matched Antibody Pair, PBS Only. Capture antibody: 60144-3-PBS. Detection antibody: 68979-1-PBS. Standard:Ag0306. Range: 0.781-25 ng/mL