

For Research Use Only

# Phospho-Beta Catenin (Ser675) Recombinant antibody, PBS Only



Catalog Number: 80084-1-PBS

## Basic Information

**Catalog Number:**

80084-1-PBS

**Size:**

1 mg/ml

**Source:**

Rabbit

**Isotype:**

IgG

**GenBank Accession Number:**

BC058926

**GeneID (NCBI):**

1499

**ENSEMBL Gene ID:**

ENSG00000168036

**UNIPROT ID:**

P35222

**Full Name:**

catenin (cadherin-associated protein),  
beta 1, 88kDa

**Calculated MW:**

781 aa, 86 kDa

**Observed MW:**

90-100 kDa

**Purification Method:**

Protein A purification

**CloneNo.:**

6D6

## Applications

**Tested Applications:**

WB, Indirect ELISA, IF

**Species Specificity:**

Human, mouse, rat

## Background Information

$\beta$ -Catenin, also known as CTNNB1, is an evolutionarily conserved, multifunctional intracellular protein.  $\beta$ -Catenin was originally identified in cell adherens junctions (AJs) where it functions to bridge the cytoplasmic domain of cadherins to  $\alpha$ -catenin and the actin cytoskeleton. Besides its essential role in the AJs,  $\beta$ -catenin is also a key downstream component of the canonical Wnt pathway that plays diverse and critical roles in embryonic development and adult tissue homeostasis. The Wnt/ $\beta$ -catenin pathway is also involved in the activation of other intracellular messengers such as calcium fluxes, JNK, and SRC kinases. Deregulation of  $\beta$ -catenin activity is associated with multiple diseases including cancers. (PMID: 22617422; 18334222). PKA was shown to phosphorylate  $\beta$ -catenin at Ser675. Phosphorylation at Ser675 induces  $\beta$ -catenin accumulation in the nucleus and increases its transcriptional activity.

## Storage

**Storage:**

Store at -80°C.

**Storage Buffer:**

PBS Only

For technical support and original validation data for this product please contact:

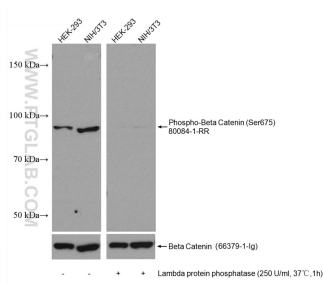
T: 4006900926

E: [Proteintech-CN@ptglab.com](mailto:Proteintech-CN@ptglab.com)

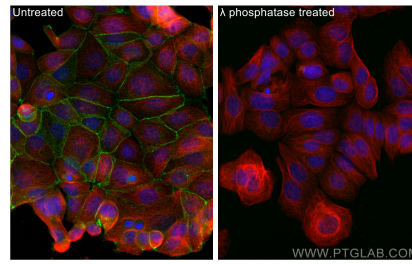
W: [ptgcn.com](http://ptgcn.com)

**This product is exclusively available under Proteintech Group brand and is not available to purchase from any other manufacturer.**

## Selected Validation Data



Lambda protein phosphatase treated HEK-293 and NIH/3T3 and Non-treated HEK-293 and NIH/3T3 cells were subjected to SDS PAGE followed by western blot with 80084-1-RR (Phospho-Beta Catenin (Ser675) antibody) at dilution of 1:10000 incubated at room temperature for 1.5 hours. The membrane was re-blotted with Beta Catenin antibody 66379-1-Ig as control. This data was developed using the same antibody clone with 80084-1-PBS in a different storage buffer formulation.



Immunofluorescent analysis of (4% PFA) fixed  $\lambda$  phosphatase treated MCF-7 cells using Phospho-Beta Catenin (Ser675) antibody (80084-1-RR, Clone: 6D6) at dilution of 1:1000 and CoraLite<sup>®</sup>488-Conjugated AffiniPure Goat Anti-Rabbit IgG(H+L), Alpha Tubulin antibody (66031-1-Ig, Clone: 1E4C11, red). This data was developed using the same antibody clone with 80084-1-PBS in a different storage buffer formulation.