

For Research Use Only

# STAT3 Recombinant antibody, PBS Only



Catalog Number: 80149-1-PBS

## Basic Information

<b>Catalog Number:</b> 80149-1-PBS	<b>GenBank Accession Number:</b> BC000627	<b>Purification Method:</b> Protein A purification
<b>Size:</b> 1 mg/ml	<b>GeneID (NCBI):</b> 6774	<b>CloneNo.:</b> 3H1
<b>Source:</b> Rabbit	<b>UNIPROT ID:</b> P40763	
<b>Isotype:</b> IgG	<b>Full Name:</b> signal transducer and activator of transcription 3 (acute-phase response factor)	
	<b>Calculated MW:</b> 770 aa, 88 kDa	
	<b>Observed MW:</b> 88 kDa	

## Applications

**Tested Applications:**  
WB, Indirect ELISA

**Species Specificity:**  
Human, Mouse

## Background Information

Signal transducer and activator of transcription 3 (acute-phase response factor) (STAT3, synonyms: APRF, FLJ20882, MGC16063) is a member of the STAT protein family. In response to cytokines and growth factors, STAT family members are phosphorylated by the receptor associated kinases, and then form homo- or heterodimers that translocate to the cell nucleus where they act as transcription activators. STAT3 is activated through phosphorylation in response to various cytokines and growth factors including IFNs, EGF, IL5, IL6, HGF, LIF and BMP2. STAT3 mediates the expression of a variety of genes in response to cell stimuli, and thus plays a key role in many cellular processes such as cell growth and apoptosis. The small GTPase Rac1 has been shown to bind and regulate the activity of STAT3.

## Storage

**Storage:**  
Store at -80°C.

**Storage Buffer:**  
PBS Only

For technical support and original validation data for this product please contact:

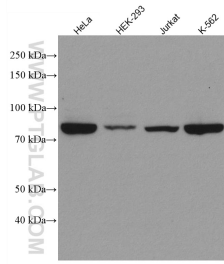
T: 4006900926

E: [Proteintech-CN@ptglab.com](mailto:Proteintech-CN@ptglab.com)

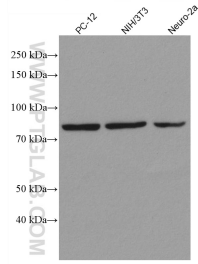
W: [ptgcn.com](http://ptgcn.com)

This product is exclusively available under Proteintech Group brand and is not available to purchase from any other manufacturer.

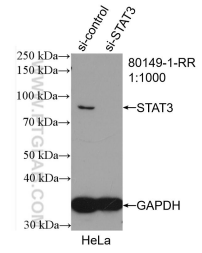
## Selected Validation Data



Various lysates were subjected to SDS PAGE followed by western blot with 80149-1-RR (STAT3 antibody) at dilution of 1:4000 incubated at room temperature for 1.5 hours. This data was developed using the same antibody clone with 80149-1-PBS in a different storage buffer formulation.



Various lysates were subjected to SDS PAGE followed by western blot with 80149-1-RR (STAT3 antibody) at dilution of 1:4000 incubated at room temperature for 1.5 hours. This data was developed using the same antibody clone with 80149-1-PBS in a different storage buffer formulation.



WB result of STAT3 antibody (80149-1-RR; 1:1000; incubated at room temperature for 1.5 hours) with sh-Control and sh-STAT3 transfected HeLa cells. This data was developed using the same antibody clone with 80149-1-PBS in a different storage buffer formulation.