

For Research Use Only

# IRF3 Recombinant antibody, PBS Only



Catalog Number: 80519-1-PBS

## Basic Information

<b>Catalog Number:</b> 80519-1-PBS	<b>GenBank Accession Number:</b> BC009395	<b>Purification Method:</b> Protein A purification
<b>Size:</b> 1 mg/ml	<b>GeneID (NCBI):</b> 3661	<b>CloneNo.:</b> 2H6
<b>Source:</b> Rabbit	<b>UNIPROT ID:</b> Q14653	
<b>Isotype:</b> IgG	<b>Full Name:</b> interferon regulatory factor 3	
	<b>Calculated MW:</b> 47 kDa	
	<b>Observed MW:</b> 50-60 kDa	

## Applications

**Tested Applications:**  
WB, Indirect ELISA, IHC, IF

**Species Specificity:**  
Human, mouse, Zebrafish

## Background Information

The virus-induced expression of interferon (IFN) genes in infected cells implicates in the interplay of several constitutively expressed and virus-activated transcription factors. A family of IFN regulatory factors (IRFs) have been shown to have a role in the transcription of IFN genes as well as IFN-stimulated genes. IRF3 is a novel key transcriptional regulator of type I IFN-dependent immune responses and involves in the innate immune response against DNA and RNA viruses, by binding to the promoters of IFN. It is located in the cytoplasm of uninfected cells in an inactive form, and following viral infection, double-stranded RNA (dsRNA), or toll-like receptor (TLR) signaling, could be phosphorylated by IKKε and TBK1 kinases. This induces a conformational change, leading to its dimerization, nuclear localization and association with CREB binding protein (CREBBP) to form dsRNA-activated factor 1 (DRAFI), a complex which activates the transcription of the type I IFN and ISG genes.

## Storage

**Storage:**  
Store at -80°C.

**Storage Buffer:**  
PBS Only

For technical support and original validation data for this product please contact:

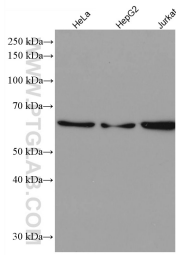
T: 4006900926

E: [Proteintech-CN@ptglab.com](mailto:Proteintech-CN@ptglab.com)

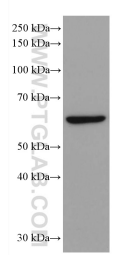
W: [ptgcn.com](http://ptgcn.com)

**This product is exclusively available under Proteintech Group brand and is not available to purchase from any other manufacturer.**

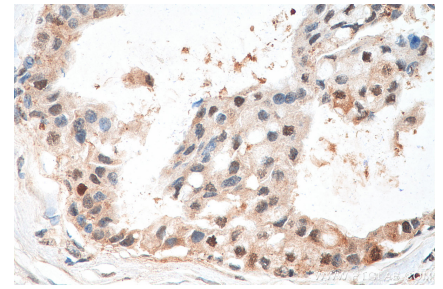
## Selected Validation Data



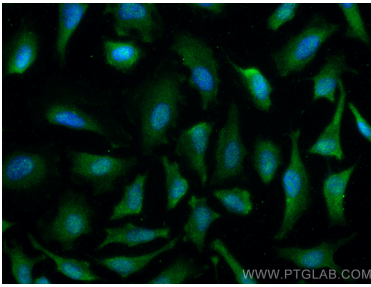
Various lysates were subjected to SDS PAGE followed by western blot with 80519-1-RR (IRF3 antibody) at dilution of 1:5000 incubated at room temperature for 1.5 hours. This data was developed using the same antibody clone with 80519-1-PBS in a different storage buffer formulation.



RAW 264.7 cells were subjected to SDS PAGE followed by western blot with 80519-1-RR (IRF3 antibody) at dilution of 1:5000 incubated at room temperature for 1.5 hours. This data was developed using the same antibody clone with 80519-1-PBS in a different storage buffer formulation.



Immunohistochemical analysis of paraffin-embedded human breast cancer tissue slide using 80519-1-RR (IRF3 antibody) at dilution of 1:200 (under 40x lens). Heat mediated antigen retrieval with Tris-EDTA buffer (pH 9.0). This data was developed using the same antibody clone with 80519-1-PBS in a different storage buffer formulation.



Immunofluorescent analysis of (-20°C Methanol) fixed HeLa cells using IRF3 antibody (80519-1-RR, Clone: 2H6 ) at dilution of 1:200 and CoraLite®488-Conjugated AffiniPure Goat Anti-Rabbit IgG(H+L). This data was developed using the same antibody clone with 80519-1-PBS in a different storage buffer formulation.