

For Research Use Only

# Phospho-TSC2 (Thr1462) Recombinant antibody



Catalog Number: 80698-1-RR

## Basic Information

**Catalog Number:**

80698-1-RR

**Size:**

1000 µg/ml

**Source:**

Rabbit

**Isotype:**

IgG

**GenBank Accession Number:**

BC150300

**GeneID (NCBI):**

7249

**UNIPROT ID:**

P49815

**Full Name:**

tuberous sclerosis 2

**Calculated MW:**

1807 aa, 201 kDa

**Observed MW:**

200 kDa

**Purification Method:**

Protein A purification

**CloneNo.:**

1L20

**Recommended Dilutions:**

WB 1:2000-1:10000

## Applications

**Tested Applications:**

WB, ELISA

**Species Specificity:**

Human

**Positive Controls:**

WB : Calyculin A treated HEK-293 cells,

## Background Information

TSC2, also named Tuberin, plays an essential role in the cellular energy response pathway. TSC2 forms a physical and functional complex with TSC1 that can inhibit the nutrient-mediated or growth factor-stimulated phosphorylation of S6K1 and EIF4EBP1 by negatively regulating mTORC1 signaling. It has been reported that TSC2 can be phosphorylated at Thr1462 by Akt/PKB involved in stimulating cell growth and is activated by insulin. (PMID: 14651849, 12172553)

## Storage

**Storage:**

Store at -20°C. Stable for one year after shipment.

**Storage Buffer:**

PBS with 0.02% sodium azide and 50% glycerol pH 7.3.

Aliquoting is unnecessary for -20°C storage

For technical support and original validation data for this product please contact:

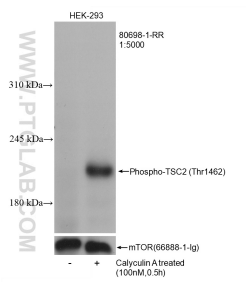
T: 4006900926

E: [Proteintech-CN@ptglab.com](mailto:Proteintech-CN@ptglab.com)

W: [ptgcn.com](http://ptgcn.com)

**This product is exclusively available under Proteintech Group brand and is not available to purchase from any other manufacturer.**

## Selected Validation Data



Non-treated and Calyculin A treated HEK-293 cells were subjected to SDS PAGE followed by western blot with 80698-1-RR (Phospho-TSC2 (Thr1462) antibody) at dilution of 1:5000 incubated at room temperature for 1.5 hours. The membrane was stripped and re-blotted with mTOR antibody (66888-1-Ig) as the loading control.