

For Research Use Only

Alpha Tubulin Recombinant antibody



Catalog Number: 80762-1-RR

Featured Product

3 Publications

Basic Information

Catalog Number:

80762-1-RR

Size:

1000 µg/ml

Source:

Rabbit

Isotype:

IgG

Immunogen Catalog Number:

AG18034

GenBank Accession Number:

BC009314

GeneID (NCBI):

10376

UNIPROT ID:

P68363

Full Name:

tubulin, alpha 1b

Calculated MW:

50 kDa

Observed MW:

50-55 kDa

Purification Method:

Protein A purification

CloneNo.:

1G7

Recommended Dilutions:

WB 1:5000-1:50000

IF 1:500-1:2000

Applications

Tested Applications:

IF/ICC, IF-P, WB, ELISA

Cited Applications:

IF, WB

Species Specificity:

Human, mouse, rat

Cited Species:

human, mouse

Positive Controls:

WB : HeLa cells, HEK-293 cells, Jurkat cells, K-562 cells, HSC-T6 cells, NIH/3T3 cells, rat brain, mouse brain

IF : C2C12 cells,

Background Information

There are five tubulins in human cells: alpha, beta, gamma, delta, and epsilon. Tubulins are conserved across species. They form heterodimers, which multimerize to form a microtubule filament. An alpha and beta tubulin heterodimer is the basic structural unit of microtubules. The heterodimer does not come apart once formed. The alpha and beta tubulins, which are each about 55 kDa MW, are homologous but not identical. Alpha tubulin is useful for scientists across fields as an internal control due to its high, ubiquitous expression pattern.

Notable Publications

Author	Pubmed ID	Journal	Application
Danjie Liu	35859853	Dose Response	WB
Cheng Chen	37417356	Mol Med Rep	WB
Aleksandra Klimas	36593399	Nat Biotechnol	IF

Storage

Storage:

Store at -20°C. Stable for one year after shipment.

Storage Buffer:

PBS with 0.02% sodium azide and 50% glycerol pH 7.3.

Aliquoting is unnecessary for -20°C storage

For technical support and original validation data for this product please contact:

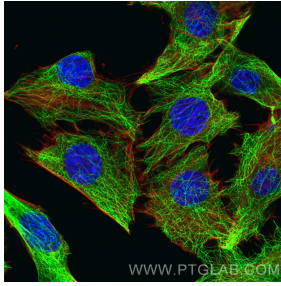
T: 4006900926

E: Proteintech-CN@ptglab.com

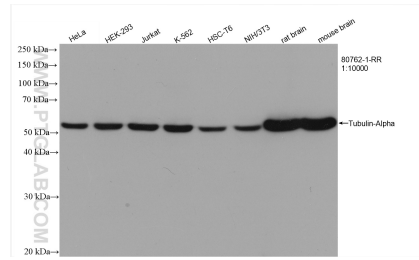
W: ptgcn.com

This product is exclusively available under Proteintech Group brand and is not available to purchase from any other manufacturer.

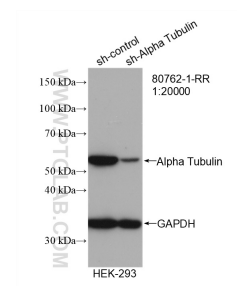
Selected Validation Data



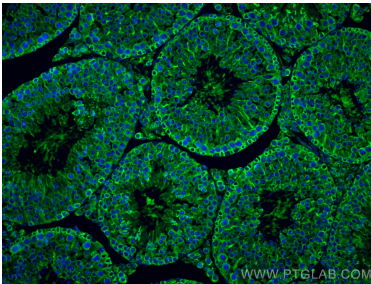
Immunofluorescent analysis of (4% PFA) fixed C2C12 cells using Alpha Tubulin antibody (80762-1-RR, Clone: 1G7) at dilution of 1:1000 and CoraLite®488-Conjugated AffiniPure Goat Anti-Rabbit IgG(H+L), CL594-Phalloidin (red).



Various lysates were subjected to SDS PAGE followed by western blot with 80762-1-RR (Tubulin-Alpha antibody) at dilution of 1:10000 incubated at room temperature for 1.5 hours.



WB result of Alpha Tubulin antibody (80762-1-RR; 1:20000; incubated at room temperature for 1.5 hours) with sh-Control and sh-alpha Tubulin transfected HEK-293 cells.



Immunofluorescent analysis of (4% PFA) fixed paraffin-embedded mouse testis tissue using Alpha Tubulin antibody (80762-1-RR, Clone: 1G7) at dilution of 1:400 and CoraLite®488-Conjugated AffiniPure Goat Anti-Rabbit IgG(H+L) (SA00013-2). Heat mediated antigen retrieval with Tris-EDTA buffer (pH 9.0).