

For Research Use Only

Phospho-BCL2 (Ser70) Recombinant antibody, PBS Only



Catalog Number: 80771-2-PBS

Basic Information

Catalog Number:

80771-2-PBS

Size:

1 mg/ml

Source:

Rabbit

Isotype:

IgG

GenBank Accession Number:

BC027258

GeneID (NCBI):

596

UNIPROT ID:

P10415

Full Name:

B-cell CLL/lymphoma 2

Calculated MW:

26 kDa

Observed MW:

26 kDa

Purification Method:

Protein A purification

CloneNo.:

230061A8

Applications

Tested Applications:

WB, Indirect ELISA

Species Specificity:

Human

Background Information

BCL2 belongs to the Bcl-2 family. The anti-apoptotic protein BCL2 can bind to the pro-apoptotic protein BAX or BAK1 to form heterodimers that modulate apoptosis. BCL2 phosphorylation at Ser70 enhances binding to BAX and BAD and is essential for its anti-apoptotic activity. Conversely, BCL2 also regulates autophagy via interaction with BECN1/Beclin 1; moreover, BCL2 phosphorylation including at Ser70 leads to its dissociation from BECN1 and induction of autophagy. These findings suggest that BCL2 regulates the balance between apoptosis and autophagy. (PMID: 29433359)

Storage

Storage:

Store at -80°C.

Storage Buffer:

PBS Only

For technical support and original validation data for this product please contact:

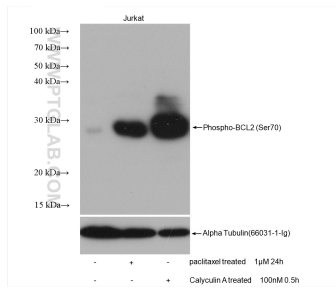
T: 4006900926

E: Proteintech-CN@ptglab.com

W: ptgcn.com

This product is exclusively available under Proteintech Group brand and is not available to purchase from any other manufacturer.

Selected Validation Data



Non-treated Jurkat cells, paclitaxel treated and Calyculin A treated Jurkat cells were subjected to SDS PAGE followed by western blot with 80771-2-RR (Phospho-BCL2 (Ser70) antibody) at dilution of 1:5000 incubated at room temperature for 1.5 hours. The membrane was stripped and re-blotted with Alpha Tubulin antibody as loading control. This data was developed using the same antibody clone with 80771-2-PBS in a different storage buffer formulation.