

For Research Use Only

# p38 MAPK Recombinant antibody, PBS Only



Catalog Number: 80821-2-PBS

## Basic Information

<b>Catalog Number:</b> 80821-2-PBS	<b>GenBank Accession Number:</b> BC031574	<b>Purification Method:</b> Protein A purification
<b>Size:</b> 1 mg/ml	<b>GeneID (NCBI):</b> 1432	<b>CloneNo.:</b> 230263D11
<b>Source:</b> Rabbit	<b>UNIPROT ID:</b> Q16539	
<b>Isotype:</b> IgG	<b>Full Name:</b> mitogen-activated protein kinase 14	
<b>Immunogen Catalog Number:</b> AG5115	<b>Calculated MW:</b> 360 aa, 41 kDa	
	<b>Observed MW:</b> 38-42 kDa	

## Applications

**Tested Applications:**  
WB, Indirect ELISA, IF, FC

**Species Specificity:**  
Human, mouse, rat

## Background Information

MAPK14 (mitogen-activated protein kinase 14) is also named as SAPIK2A, p38MAPK, CSBP1, RK, p38, EXIP, Mxi2, CSBP2, PRKM14, PRKM15, CSPB1, p38ALPHA and belongs to the MAP kinase subfamily. MAPK14-signaling is a central pathway for the integration of instructive signals in dendritic cells for T(H)17 differentiation and inflammation (PMID:22231518). It plays an important role in the regulation of hematopoietic stem cell self-renewal in vitro and inhibition of MAPK14 activation with a small molecule inhibitor may represent a novel approach to promote ex vivo expansion of hematopoietic stem cell (PMID:21198398). This protein has 4 isoforms produced by alternative splicing.

## Storage

**Storage:**  
Store at -80°C.

**Storage Buffer:**  
PBS Only

For technical support and original validation data for this product please contact:

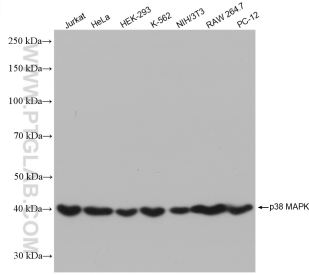
T: 4006900926

E: [Proteintech-CN@ptglab.com](mailto:Proteintech-CN@ptglab.com)

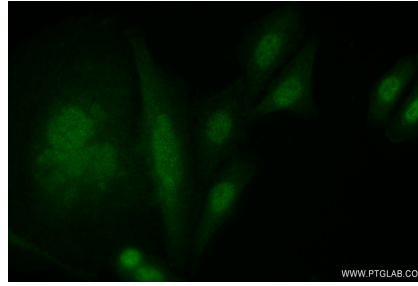
W: [ptgcn.com](http://ptgcn.com)

This product is exclusively available under Proteintech Group brand and is not available to purchase from any other manufacturer.

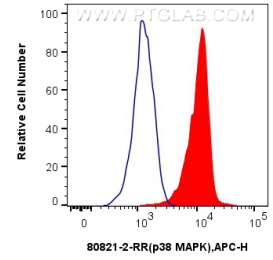
## Selected Validation Data



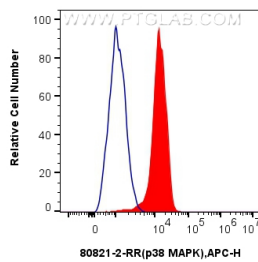
Various lysates were subjected to SDS PAGE followed by western blot with 80821-2-RR (p38 MAPK antibody) at dilution of 1:5000 incubated at room temperature for 1.5 hours. This data was developed using the same antibody clone with 80821-2-PBS in a different storage buffer formulation.



Immunofluorescent analysis of (4% PFA) fixed HepG2 cells using p38 MAPK antibody (80821-2-RR, Clone: 230263D11) at dilution of 1:400 and CoraLite®488-Conjugated AffiniPure Goat Anti-Rabbit IgG(H+L). This data was developed using the same antibody clone with 80821-2-PBS in a different storage buffer formulation.



$1 \times 10^6$  HeLa cells were intracellularly stained with 0.25 ug Anti-Human p38 MAPK (80821-2-RR, Clone:230263D11) and APC-Conjugated AffiniPure Goat Anti-Rabbit IgG(H+L)(red), or 0.25 ug Rabbit IgG control Rabbit PolyAb (30000-0-AP) (blue). Cells were fixed and permeabilized with True-Nuclear Transcription Factor Buffer Set. This data was developed using the same antibody clone with 80821-2-PBS in a different storage buffer formulation.



$1 \times 10^6$  A431 cells were intracellularly stained with 0.25 ug Anti-Human p38 MAPK (80821-2-RR, Clone:230263D11) and APC-Conjugated AffiniPure Goat Anti-Rabbit IgG(H+L)(red), or 0.25 ug Rabbit IgG control Rabbit PolyAb (30000-0-AP) (blue). Cells were fixed and permeabilized with True-Nuclear Transcription Factor Buffer Set. This data was developed using the same antibody clone with 80821-2-PBS in a different storage buffer formulation.