

For Research Use Only

# ALDOA Recombinant antibody, PBS Only



Catalog Number: 80837-1-PBS

## Basic Information

<b>Catalog Number:</b> 80837-1-PBS	<b>GenBank Accession Number:</b> BC016800	<b>Purification Method:</b> Protein A purification
<b>Size:</b> 1 mg/ml	<b>GeneID (NCBI):</b> 226	<b>CloneNo.:</b> 2F4
<b>Source:</b> Rabbit	<b>UNIPROT ID:</b> P04075	
<b>Isotype:</b> IgG	<b>Full Name:</b> aldolase A, fructose-bisphosphate	
<b>Immunogen Catalog Number:</b> AG1726	<b>Calculated MW:</b> 39 kDa	
	<b>Observed MW:</b> 35-40 kDa	

## Applications

**Tested Applications:**  
WB, Indirect ELISA, IF

**Species Specificity:**  
Human, Mouse, Pig, rat

## Background Information

ALDOA (Fructose-bisphosphate aldolase A) is also named as lung cancer antigen NY-LU-1, muscle-type aldolase, ALDA and belongs to the class I fructose-bisphosphate aldolase family. The ALDOA gene encodes a homotetrameric protein (PMID:14615364). It is found in skeletal muscle and red blood cells, and functions in glycolysis, promoting the reversible cleavage of FBP to triose phosphate, G-3-P and DHAP. ALDOA is upregulated in various cancers, including human lung squamous and renal cell carcinomas (PMID:19937139).

## Storage

**Storage:**  
Store at -80°C.

**Storage Buffer:**  
PBS Only

For technical support and original validation data for this product please contact:

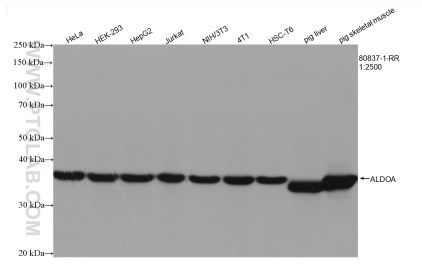
T: 4006900926

E: [Proteintech-CN@ptglab.com](mailto:Proteintech-CN@ptglab.com)

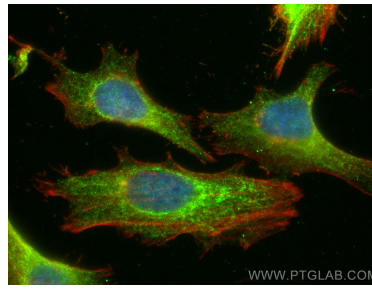
W: [ptgcn.com](http://ptgcn.com)

**This product is exclusively available under Proteintech Group brand and is not available to purchase from any other manufacturer.**

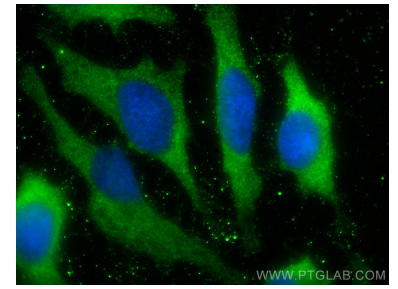
## Selected Validation Data



Various lysates were subjected to SDS PAGE followed by western blot with 80837-1-RR (ALDOA antibody) at dilution of 1:2500 incubated at room temperature for 1.5 hours. This data was developed using the same antibody clone with 80837-1-PBS in a different storage buffer formulation.



Immunofluorescent analysis of (4% PFA) fixed HeLa cells using ALDOA antibody (80837-1-RR, Clone: 2F4) at dilution of 1:200 and CoraLite®488-Conjugated AffiniPure Goat Anti-Rabbit IgG(H+L), CL594-phalloidin (red). This data was developed using the same antibody clone with 80837-1-PBS in a different storage buffer formulation.



Immunofluorescent analysis of (-20°C Methanol) fixed HeLa cells using ALDOA antibody (80837-1-RR, Clone: 2F4) at dilution of 1:200 and CoraLite®488-Conjugated AffiniPure Goat Anti-Rabbit IgG(H+L). This data was developed using the same antibody clone with 80837-1-PBS in a different storage buffer formulation.