

For Research Use Only

MCP-1/CCL2 Recombinant antibody, PBS Only (Capture)

Catalog Number:80847-4-PBS



Basic Information

Catalog Number:

80847-4-PBS

Size:

1 mg/ml

Source:

Rabbit

Isotype:

IgG

GenBank Accession Number:

BC009716

GeneID (NCBI):

6347

UNIPROT ID:

P13500

Full Name:

chemokine (C-C motif) ligand 2

Calculated MW:

99 aa, 11 kDa

Purification Method:

Protein A purification

CloneNo.:

241165B11

Applications

Tested Applications:

Cytometric bead array, Sandwich ELISA, Indirect ELISA,
Sample test

Species Specificity:

human

Background Information

Storage

Storage:

Store at -80°C.

The product is shipped with ice packs. Upon receipt, store it immediately at -80°C

Storage Buffer:

PBS Only

For technical support and original validation data for this product please contact:

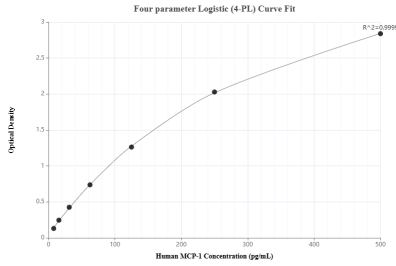
T: 4006900926

E: Proteintech-CN@ptglab.com

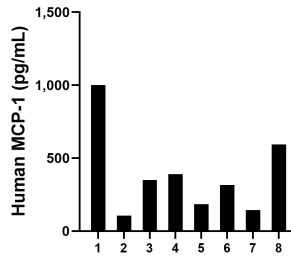
W: ptgcn.com

This product is exclusively available under Proteintech Group brand and is not available to purchase from any other manufacturer.

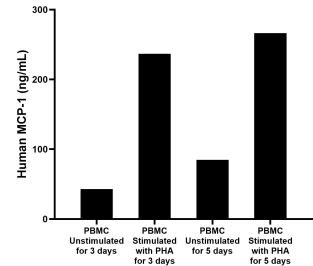
Selected Validation Data



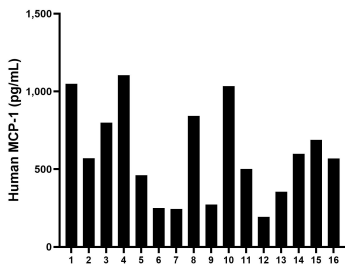
Sandwich ELISA standard curve of MP00938-1, Human MCP-1 Recombinant Matched Antibody Pair - PBS only. 80847-4-PBS was coated to a plate as the capture antibody and incubated with serial dilutions of standard Eg31375. 80847-7-PBS was HRP conjugated as the detection antibody. Range: 7.8-500 pg/mL



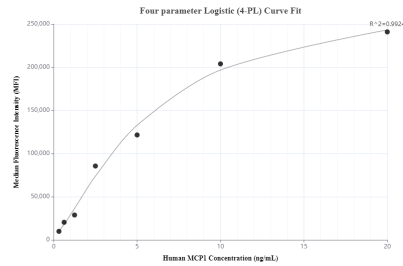
Urine of eight individual healthy human donors was measured. The human MCP-1 concentration of detected samples was determined to be 385.1 pg/mL with a range of 106.1 - 999.8 pg/mL



Human peripheral blood mononuclear cells (1×10^6 cells/mL) were cultured in RPMI-1640 supplemented with 10% fetal bovine serum, 100 U/mL penicillin, and 100 μ g/mL streptomycin sulfate. The cells were unstimulated or stimulated with 10 μ g/mL PHA. Aliquots of the cell culture supernates were removed on days 3 and 5 and assayed for levels of human MCP-1.



Serum of sixteen individual healthy human donors was measured. The human MCP-1 concentration of detected samples was determined to be 595.9 pg/mL with a range of 193.4 - 1,105.3 pg/mL



Cytometric bead array standard curve of MP00938-1, MCP-1 Recombinant Matched Antibody Pair, PBS Only. Capture antibody: 80847-4-PBS. Detection antibody: 80847-7-PBS. Standard: Eg31375. Range: 0.313-20 ng/mL