

For Research Use Only

Phospho-Paxillin (Tyr118) Recombinant antibody

Catalog Number: 81180-2-RR



Basic Information

Catalog Number:

81180-2-RR

Size:

1000 μ g/ml

Source:

Rabbit

Isotype:

IgG

GenBank Accession Number:

BC136787

GeneID (NCBI):

5829

UNIPROT ID:

P49023

Full Name:

paxillin

Calculated MW:

591 aa, 65 kDa

Observed MW:

68 kDa

Purification Method:

Protein A purification

CloneNo.:

241063E10

Recommended Dilutions:

WB 1:2000-1:10000

Applications

Tested Applications:

WB, ELISA

Species Specificity:

human

Positive Controls:

WB : pervanadate treated HeLa cells,

Background Information

Paxillin (p68-kD) is one of the integrin assembly proteins and can interact directly with several integrin assembly proteins, including vinculin, talin, β 1 integrin, focal adhesion kinase (FAK), c-Src and Csk. Integrin-mediated tyrosine phosphorylation also enables paxillin to interact with various signaling molecules: tyrosine residues (Y) 31 and 118 being especially predominant targets of phosphorylation by kinases and creating binding sites for the SH2 domain of adaptor protein Crk. Thus, paxillin plays a pivotal role in cell adhesion, migration and further oncogenic transformation. (PMID: 11774284)

Storage

Storage:

Store at -20°C. Stable for one year after shipment.

Storage Buffer:

PBS with 0.02% sodium azide and 50% glycerol pH 7.3.

Aliquoting is unnecessary for -20°C storage

For technical support and original validation data for this product please contact:

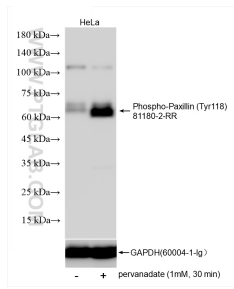
T: 4006900926

E: Proteintech-CN@ptglab.com

W: ptgcn.com

This product is exclusively available under Proteintech Group brand and is not available to purchase from any other manufacturer.

Selected Validation Data



Non-treated and pervanadate treated HeLa cells were subjected to SDS PAGE followed by western blot with 81180-2-RR (Phospho-Paxillin (Tyr118) antibody) at dilution of 1:5000 incubated at room temperature for 1.5 hours. The membrane was stripped and re-blotted with GAPDH (60004-1-Ig) antibody as a loading control.