

For Research Use Only

# EEF1A1 Recombinant antibody

Catalog Number: 81377-1-RR



## Basic Information

**Catalog Number:**

81377-1-RR

**Size:**

250 µg/ml

**Source:**

Rabbit

**Isotype:**

IgG

**Immunogen Catalog Number:**

AG1938

**GenBank Accession Number:**

BC014224

**GeneID (NCBI):**

1915

**UNIPROT ID:**

P68104

**Full Name:**

eukaryotic translation elongation factor 1 alpha 1

**Calculated MW:**

462 aa, 50 kDa

**Observed MW:**

50 kDa

**Purification Method:**

Protein A purification

**CloneNo.:**

2B16

**Recommended Dilutions:**

WB 1:5000-1:50000

IP 0.5-4.0 µg for 1.0-3.0 mg of total protein lysate

IHC 1:250-1:1000

IF 1:200-1:800

## Applications

**Tested Applications:**

IF/ICC, IHC, IP, WB, ELISA

**Species Specificity:**

Human, Mouse, Rat

**Note-IHC: suggested antigen retrieval with TE buffer pH 9.0; (\*) Alternatively, antigen retrieval may be performed with citrate buffer pH 6.0**

**Positive Controls:**

**WB:** HEK-293 cells, HeLa cells, HepG2 cells, Jurkat cells, K-562 cells, NIH/3T3 cells, HSC-T6 cells

**IP:** HeLa cells,

**IHC:** mouse brain tissue, human pancreas cancer tissue

**IF:** HepG2 cells,

## Background Information

EEF1A1, also named as EEF1A, EF1A and LENG7, belongs to the GTP-binding elongation factor family. This protein promotes the GTP-dependent binding of aminoacyl-tRNA to the A-site of ribosomes during protein biosynthesis. It is a typical housekeeping gene product required for the maintenance of cell proliferation and/or survival. In addition, EEF1A1 protects the aminoester bond against hydrolysis until a correct match between the codon on mRNA and the anti-codon on tRNA can be achieved.

## Storage

**Storage:**

Store at -20°C. Stable for one year after shipment.

**Storage Buffer:**

PBS with 0.02% sodium azide and 50% glycerol pH 7.3.

Aliquoting is unnecessary for -20°C storage

For technical support and original validation data for this product please contact:

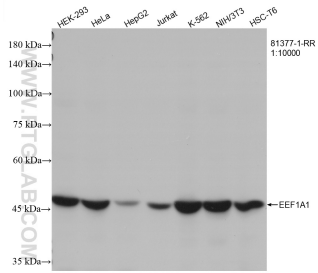
T: 4006900926

E: [Proteintech-CN@ptglab.com](mailto:Proteintech-CN@ptglab.com)

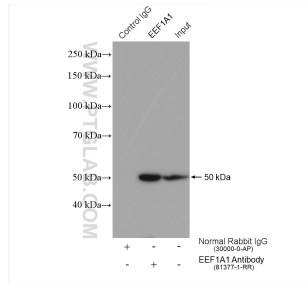
W: [ptgcn.com](http://ptgcn.com)

**This product is exclusively available under Proteintech Group brand and is not available to purchase from any other manufacturer.**

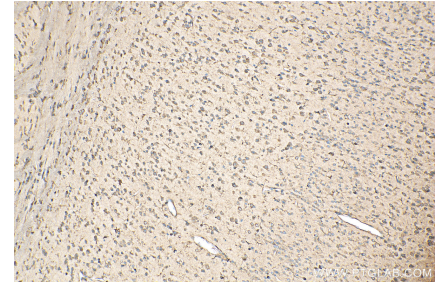
## Selected Validation Data



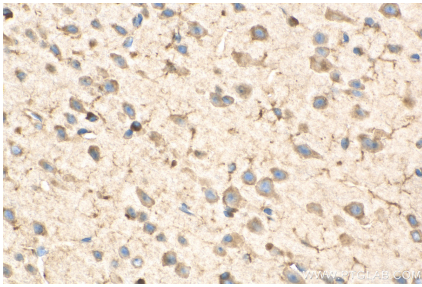
Various lysates were subjected to SDS PAGE followed by western blot with 81377-1-RR (EEF1A1 antibody) at dilution of 1:12000 incubated at room temperature for 1.5 hours.



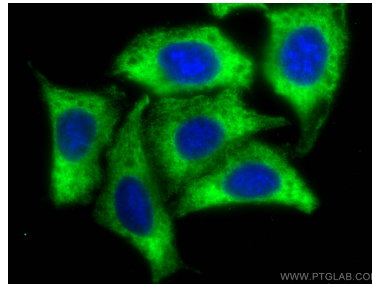
IP result of anti-EEF1A1 (IP:81377-1-RR, 4ug; Detection:81377-1-RR 1:8000) with HeLa cells lysate 1720 ug.



Immunohistochemical analysis of paraffin-embedded mouse brain tissue slide using 81377-1-RR (EEF1A1 antibody) at dilution of 1:500 (under 10x lens). Heat mediated antigen retrieval with Tris-EDTA buffer (pH 9.0).



Immunohistochemical analysis of paraffin-embedded mouse brain tissue slide using 81377-1-RR (EEF1A1 antibody) at dilution of 1:500 (under 40x lens). Heat mediated antigen retrieval with Tris-EDTA buffer (pH 9.0).



Immunofluorescent analysis of (-20°C Methanol) fixed HepG2 cells using EEF1A1 antibody (81377-1-RR, Clone: 2B16) at dilution of 1:400 and CoraLite® 488-Conjugated AffiniPure Goat Anti-Rabbit IgG(H+L).