

For Research Use Only

# FKBP10/FKBP65 Recombinant antibody, PBS Only

Catalog Number: 81567-1-PBS

Featured Product



## Basic Information

<b>Catalog Number:</b> 81567-1-PBS	<b>GenBank Accession Number:</b> BC016467	<b>Purification Method:</b> Protein A purification
<b>Size:</b> 1 mg/ml	<b>GeneID (NCBI):</b> 60681	<b>CloneNo.:</b> S94
<b>Source:</b> Rabbit	<b>UNIPROT ID:</b> Q96AY3	
<b>Isotype:</b> IgG	<b>Full Name:</b> FK506 binding protein 10, 65 kDa	
<b>Immunogen Catalog Number:</b> AG2814	<b>Calculated MW:</b> 582 aa, 64 kDa	
	<b>Observed MW:</b> 65-70 kDa	

## Applications

**Tested Applications:**  
WB, IHC, Indirect ELISA

**Species Specificity:**  
human

## Background Information

FKBP10, also known as FKBP65, is a 65 kDa FK506 binding protein that is a member of the FKBP-type peptidyl-prolyl cis/trans isomerase family. This protein localizes to the endoplasmic reticulum and acts as a molecular chaperone and binding partner of type I collagen. FKBP65 is expressed in developing tissues and re-expressed in adult tissues following injury. As documented, FKBP10 has been detected to play important roles in the initiation and progression of cancers.

## Storage

**Storage:**  
Store at -80°C.  
**The product is shipped with ice packs. Upon receipt, store it immediately at -80°C**

**Storage Buffer:**  
PBS Only

For technical support and original validation data for this product please contact:

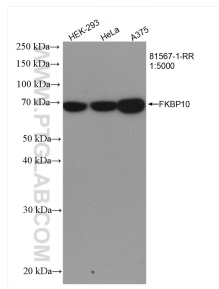
T: 4006900926

E: [Proteintech-CN@ptglab.com](mailto:Proteintech-CN@ptglab.com)

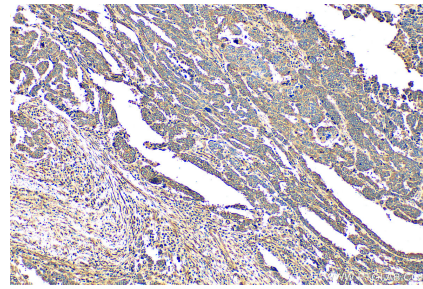
W: [ptgcn.com](http://ptgcn.com)

**This product is exclusively available under Proteintech Group brand and is not available to purchase from any other manufacturer.**

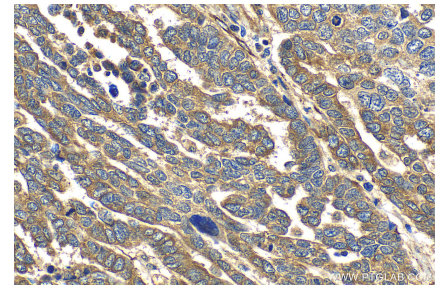
## Selected Validation Data



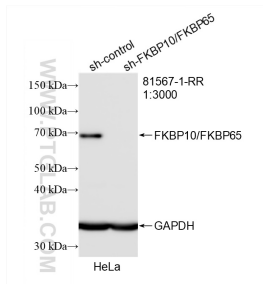
Various lysates were subjected to SDS PAGE followed by western blot with 81567-1-RR (FKBP10/FKBP65 antibody) at dilution of 1:5000 incubated at room temperature for 1.5 hours. This data was developed using the same antibody clone with 81567-1-PBS in a different storage buffer formulation.



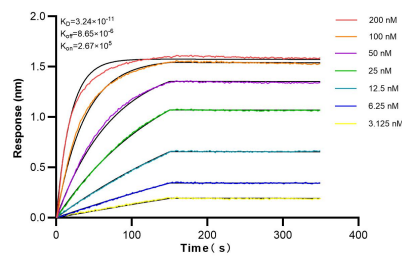
Immunohistochemical analysis of paraffin-embedded human ovary tumor tissue slide using 81567-1-RR (FKBP10/FKBP65 antibody) at dilution of 1:200 (under 10x lens). Heat mediated antigen retrieval with Tris-EDTA buffer (pH 9.0). This data was developed using the same antibody clone with 81567-1-PBS in a different storage buffer formulation.



Immunohistochemical analysis of paraffin-embedded human ovary tumor tissue slide using 81567-1-RR (FKBP10/FKBP65 antibody) at dilution of 1:200 (under 40x lens). Heat mediated antigen retrieval with Tris-EDTA buffer (pH 9.0). This data was developed using the same antibody clone with 81567-1-PBS in a different storage buffer formulation.



WB result of FKBP10/FKBP65 antibody (81567-1-RR; 1:3000); incubated at room temperature for 1.5 hours with sh-Control and sh-FKBP10/FKBP65 transfected HeLa cells. This data was developed using the same antibody clone with 81567-1-PBS in a different storage buffer formulation.



Biolayer interferometry (BLI) kinetic assays of 81567-1-RR against Human FKBP10/FKBP65 were performed. The affinity constant is 32.4 pM.