

For Research Use Only

Phospho-PKC Alpha (Thr638) Recombinant antibody, PBS Only

Catalog Number: 81575-2-PBS



Basic Information

Catalog Number:

81575-2-PBS

Size:

1 mg/ml

Source:

Rabbit

Isotype:

IgG

GenBank Accession Number:

AK055431

GeneID (NCBI):

5578

UNIPROT ID:

P17252

Full Name:

protein kinase C, alpha

Calculated MW:

77 kDa

Observed MW:

77 kDa

Purification Method:

Protein A purification

CloneNo.:

241844A10

Applications

Tested Applications:

WB, Indirect ELISA

Species Specificity:

human

Background Information

PKCs are a family of serine/threonine kinases involved in various processes in cells including proliferation, differentiation, cell survival, and apoptosis. PKC family is composed of three different subgroups: conventional (cPKC), the novel (nPKC) and atypical (aPKC). PKC α , β 1, β 2, and γ belong to cPKC, PKC δ , ϵ , η and θ are nPKC, whereas aPKC comprises of PKC ζ and λ / ι . All PKCs consist of the N-terminal regulatory region and C-terminal catalytic region (kinase domain). PKCs are physiologically activated by various extracellular signals transduced by hormones, growth factors, cytokines or antigens. The presence of activated PKCs on internal membranes leads to the phosphorylation of various interacting proteins. (PMID: 32466765, PMID: 12417016)

Storage

Storage:

Store at -80°C .

The product is shipped with ice packs. Upon receipt, store it immediately at -80°C

Storage Buffer:

PBS Only

For technical support and original validation data for this product please contact:

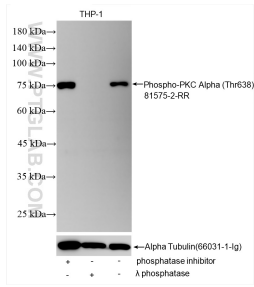
T: 4006900926

E: Proteintech-CN@ptglab.com

W: ptgcn.com

This product is exclusively available under Proteintech Group brand and is not available to purchase from any other manufacturer.

Selected Validation Data



Non-treated THP-1 cells, phosphatase inhibitor treated THP-1 cells and λ phosphatase treated THP-1 cells were subjected to SDS PAGE followed by western blot with 81575-2-RR (Phospho-PKC Alpha (Thr638) antibody) at dilution of 1:2000 incubated at room temperature for 1.5 hours. The membrane was stripped and re-blotted with Alpha Tubulin (66031-1-Ig) antibody as a loading control. This data was developed using the same antibody clone with 81575-2-

