

For Research Use Only

pan-RAS Recombinant antibody, PBS Only (Detector)



Catalog Number: 81615-1-PBS

Basic Information

Catalog Number: 81615-1-PBS	GenBank Accession Number: BC013572	Purification Method: Protein A purification
Size: 1mg/ml	GeneID (NCBI): 3845	CloneNo.: 2122
Source: Rabbit	UNIPROT ID: P01116	
Isotype: IgG	Full Name: v-Ki-ras2 Kirsten rat sarcoma viral oncogene homolog	
Immunogen Catalog Number: AG2700	Calculated MW: 188 aa, 21 kDa	
	Observed MW: 21 kDa	

Applications

Tested Applications:
WB, IF, IHC, Indirect ELISA, Cytometric bead array

Species Specificity:
Human, mouse, rat, pig

Background Information

The 21 kDa guanine-nucleotide binding proteins (K-Ras, H-Ras, and N-Ras) belong to the Ras oncogene family, whose members are related to the transforming genes of mammalian sarcoma retroviruses. K-Ras, H-Ras, and N-Ras have similar structure and sequences. These proteins can bind GTP and GDP, and they have intrinsic GTPase activity. The ras genes are ubiquitously expressed although mRNA analysis suggests different level expression in tissue. Mutations in each ras gene frequently were found in different tumors, suggesting their involvement in the development of specific neoplasia. This antibody can recognize K-Ras, H-Ras, and N-Ras.

Storage

Storage:
Store at -80°C.

Storage Buffer:
PBS Only

For technical support and original validation data for this product please contact:

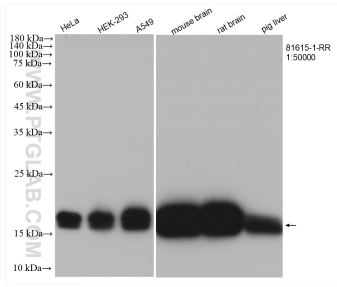
T: 4006900926

E: Proteintech-CN@ptglab.com

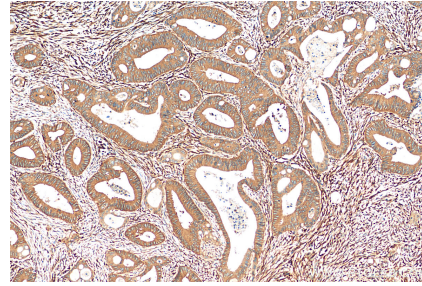
W: ptgcn.com

This product is exclusively available under Proteintech Group brand and is not available to purchase from any other manufacturer.

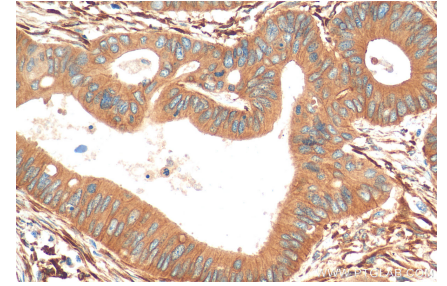
Selected Validation Data



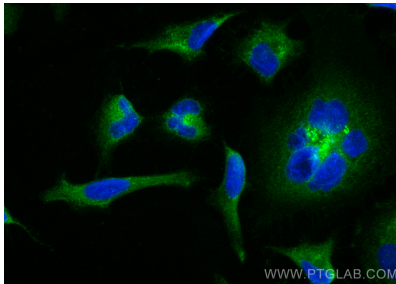
Various lysates were subjected to SDS PAGE followed by western blot with 81615-1-RR (pan-RAS antibody) at dilution of 1:50000 incubated at room temperature for 1.5 hours. This data was developed using the same antibody clone with 81615-1-PBS in a different storage buffer formulation.



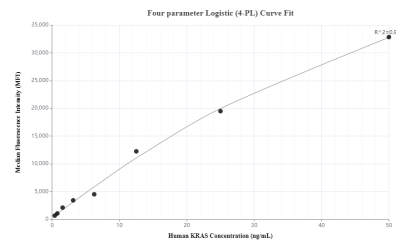
Immunohistochemical analysis of paraffin-embedded human colon cancer tissue slide using 81615-1-RR (pan-RAS antibody) at dilution of 1:1000 (under 10x lens). Heat mediated antigen retrieval with Tris-EDTA buffer (pH 9.0). This data was developed using the same antibody clone with 81615-1-PBS in a different storage buffer formulation.



Immunohistochemical analysis of paraffin-embedded human colon cancer tissue slide using 81615-1-RR (pan-RAS antibody) at dilution of 1:1000 (under 40x lens). Heat mediated antigen retrieval with Tris-EDTA buffer (pH 9.0). This data was developed using the same antibody clone with 81615-1-PBS in a different storage buffer formulation.



Immunofluorescent analysis of (-20°C Methanol) fixed HeLa cells using pan-RAS antibody (81615-1-RR, Clone: 2122) at dilution of 1:1000 and CoraLite®488-Conjugated AffiniPure Goat Anti-Rabbit IgG(H+L). This data was developed using the same antibody clone with 81615-1-PBS in a different storage buffer formulation.



Cytometric bead array standard curve of MP80009-1, KRAS Hybrid Matched Antibody Pair, KRAS Hybrid Matched Antibody Pair, PBS Only. Capture antibody: 60309-1-PBS. Detection antibody: 81615-1-PBS. Standard: Ag2700. Range: 0.391-50 ng/mL.