

For Research Use Only

CHMP4B Recombinant antibody

Catalog Number: 81691-2-RR



Basic Information

Catalog Number:

81691-2-RR

Concentration:

1000 µg/ml

Source:

Rabbit

Isotype:

IgG

Immunogen Catalog Number:

AG4544

GenBank Accession Number:

BC033859

GeneID (NCBI):

128866

UNIPROT ID:

Q9H444

Full Name:

chromatin modifying protein 4B

Calculated MW:

224 aa, 25 kDa

Observed MW:

25 kDa

Purification Method:

Protein A purification

CloneNo.:

2N22

Recommended Dilutions:

WB: 1:2000-1:10000

FC (Intra): 0.25 µg per 10⁶ cells in a
100 µl suspension

Applications

Tested Applications:

WB, FC (Intra), ELISA

Species Specificity:

human, mouse

Positive Controls:

WB : Jurkat cells, HeLa cells, HuH-7 cells, C2C12 cells

FC (Intra) : HepG2 cells,

Background Information

CHMP4B (charged multivesicular body protein 4b) is a human homologue of yeast Snf7p (also named Vps32p) and a member of CHMP family which is implicated in multivesicular body (MVB) sorting. The CHMP proteins are components of ESCRT-III (endosomal sorting complex required for transport III), a complex involved in degradation of surface receptor proteins and formation of endocytic multivesicular bodies. Among seven CHMP family members, only CHMP4 has been found to interact with Alix, a multifunctional adaptor protein in various cellular functions. This antibody is highly specific to the CHMP4B and it doesn't cross-react with other CHMPs as well as other CHMP4s (CHMP4A and CHMP4C). CHMP4B can be detected 25-33 kDa by post-translational modification (PMID:26490837).

Storage

Storage:

Store at -20°C. Stable for one year after shipment.

Storage Buffer:

PBS with 0.02% sodium azide and 50% glycerol, pH7.3

Aliquoting is unnecessary for -20°C storage

For technical support and original validation data for this product please contact:

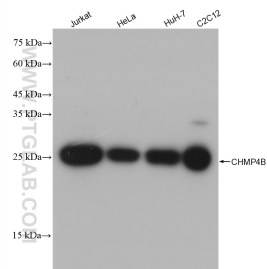
T: 4006900926

E: Proteintech-CN@ptglab.com

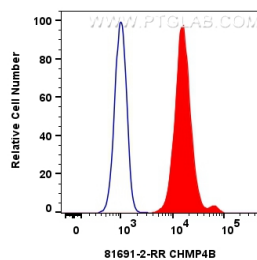
W: ptgcn.com

This product is exclusively available under Proteintech Group brand and is not available to purchase from any other manufacturer.

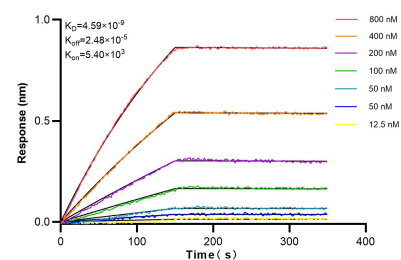
Selected Validation Data



Various lysates were subjected to SDS PAGE followed by western blot with 81691-2-RR (CHMP4B antibody) at dilution of 1:5000 incubated at room temperature for 1.5 hours.



1x10⁶ HepG2 cells were intracellularly stained with 0.25 ug CHMP4B Recombinant antibody (81691-2-RR, Clone:2N22) and CoraLite®488-Conjugated Goat Anti-Rabbit IgG(H+L) (SA00013-2) (red), or 0.25 ug Isotype Control (blue). Cells were fixed with 4% PFA and permeabilized with Flow Cytometry Perm Buffer (PF00011-C).



Biolayer interferometry (BLI) kinetic assays of 81691-2-RR against Human CHMP4B were performed. The affinity constant is 4.59 nM.