

For Research Use Only

Aequorea victoria GFP tag Recombinant antibody, PBS Only

Catalog Number: 81835-2-PBS



Basic Information

Catalog Number: 81835-2-PBS	GenBank Accession Number: M62653	Purification Method: Protein A purification
Size: 1 mg/ml	GeneID (NCBI): UNIPROT ID: P42212	CloneNo.: 241614B3
Source: Rabbit	Full Name:	
Isotype: IgG	Calculated MW: 26 kDa	
Immunogen Catalog Number: AG2128		

Applications

Tested Applications:
WB, IF/ICC, Indirect ELISA

Species Specificity:
aequorea victoria, recombinant protein

Background Information

Green Fluorescent Proteins (GFPs) encompass a diverse range of proteins carrying a green chromophore, originating from various species and forming different protein lineages. Wildtype GFP consists of 238 amino acid residues (26.9 kDa). GFP was first identified in the jellyfish *Aequorea victoria*. It emits green light with a peak wavelength of 509 nm upon excitation by blue light at 395 nm. When fused with other proteins, GFP serves as a versatile reporter protein e.g. for quantifying expression levels or facilitates visualization of subcellular localization through fluorescence microscopy. This antibody is generated against the full-length eGFP protein. It exhibits reactivity towards variants of *Aequorea victoria* GFP, including S65T-GFP, RS-GFP, YFP, CFP, and eGFP.

Storage

Storage:
Store at -80°C.
The product is shipped with ice packs. Upon receipt, store it immediately at -80°C

Storage Buffer:
PBS Only

For technical support and original validation data for this product please contact:

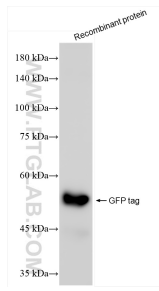
T: 4006900926

E: Proteintech-CN@ptglab.com

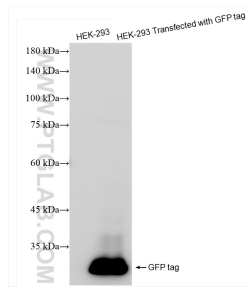
W: ptgcn.com

This product is exclusively available under Proteintech Group brand and is not available to purchase from any other manufacturer.

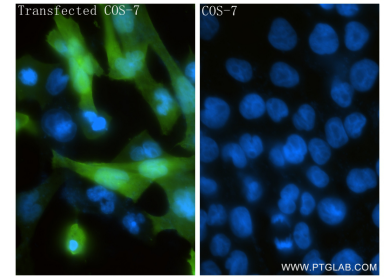
Selected Validation Data



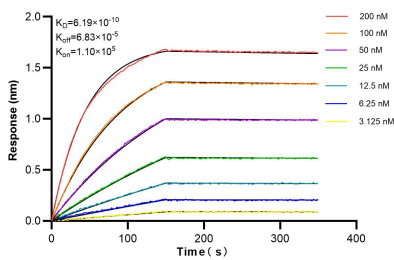
Recombinant protein were subjected to SDS PAGE followed by western blot with 81835-2-RR (GFP tag antibody) at dilution of 1:10000 incubated at room temperature for 1.5 hours. This data was developed using the same antibody clone with 81835-2-PBS in a different storage buffer formulation.



Transfected HEK-293 cells were subjected to SDS PAGE followed by western blot with 81835-2-RR (GFP tag antibody) at dilution of 1:10000 incubated at room temperature for 1.5 hours. This data was developed using the same antibody clone with 81835-2-PBS in a different storage buffer formulation.



Immunofluorescent analysis of (4% PFA) fixed Transfected COS-7 cells using GFP tag antibody (81835-2-RR, Clone: 241614B3) at dilution of 1:250 and CoraLite®488-Conjugated Goat Anti-Rabbit IgG(H+L) (SA00013-2). This data was developed using the same antibody clone with 81835-2-PBS in a different storage buffer formulation.



Biolayer interferometry (BLI) kinetic assays of 81835-2-RR against Aequorea victoria GFP tag were performed. The affinity constant is 0.619 nM.