

For Research Use Only

PIN1 Recombinant antibody, PBS Only



Catalog Number: 81857-1-PBS

Basic Information

Catalog Number: 81857-1-PBS	GenBank Accession Number: BC002899	Purification Method: Protein A purification
Size: 1mg/ml	GeneID (NCBI): 5300	CloneNo.: 5N20
Source: Rabbit	UNIPROT ID: Q13526	
Isotype: IgG	Full Name: peptidylprolyl cis/trans isomerase, NIMA-interacting 1	
Immunogen Catalog Number: AG0767	Calculated MW: 18 kDa	
	Observed MW: 18 kDa	

Applications

Tested Applications:
WB, IP, IF, IHC, Indirect ELISA

Species Specificity:
Human, mouse, rat, pig

Background Information

PIN1 (Peptidyl-prolyl cis-trans isomerase NIMA-interacting 1) is essential for mitosis progression in yeast cells and is hypothesized to perform the same role in mammalian cells. It might regulate cellular processes distinct from the cell cycle itself, such as terminal differentiation through a modulation of differentiation-specific gene expression (PMID:20801874). It colocalizes with NEK6 in the nucleus. Pin1 inhibition simultaneously blocks multiple cancer pathways, disrupts the desmoplastic and immunosuppressive TME, and upregulates PD-L1 and ENT1, rendering pancreatic ductal adenocarcinoma (PDAC) eradicable by immunochemotherapy (PMID: 34388391).

Storage

Storage:
Store at -80°C.

Storage Buffer:
PBS Only

For technical support and original validation data for this product please contact:

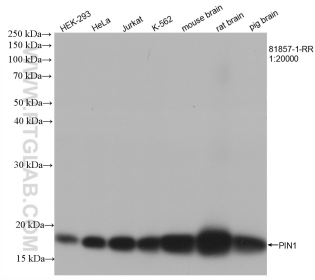
T: 4006900926

E: Proteintech-CN@ptglab.com

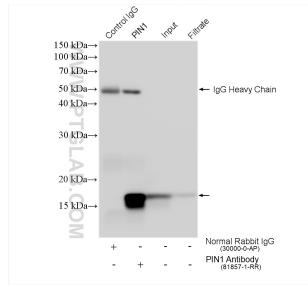
W: ptgcn.com

This product is exclusively available under Proteintech Group brand and is not available to purchase from any other manufacturer.

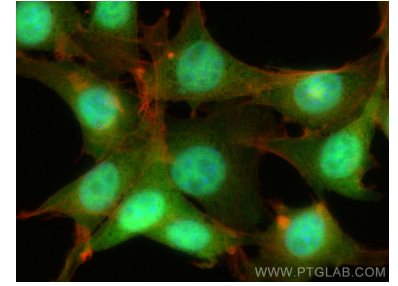
Selected Validation Data



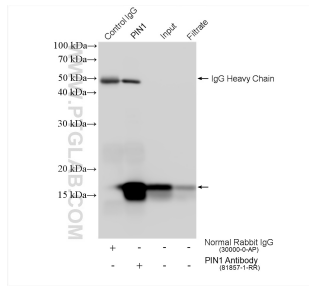
Various lysates were subjected to SDS PAGE followed by western blot with 81857-1-RR (PIN1 antibody) at dilution of 1:20000 incubated at room temperature for 1.5 hours. This data was developed using the same antibody clone with 81857-1-PBS in a different storage buffer formulation.



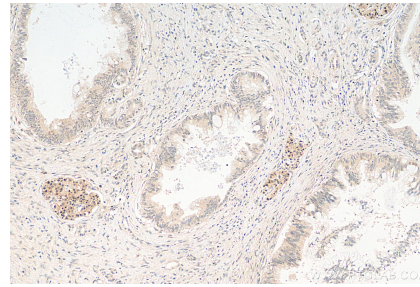
IP result of anti-PIN1 (IP:81857-1-RR, 4 μ g; Detection:81857-1-RR 1:20000) with HepG2 cells lysate 1920 μ g. This data was developed using the same antibody clone with 81857-1-PBS in a different storage buffer formulation.



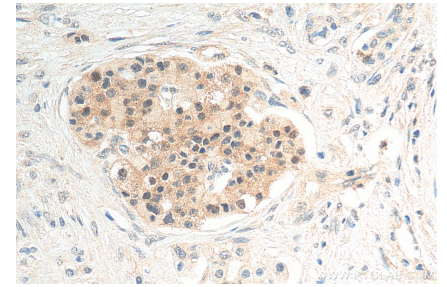
Immunofluorescent analysis of (4% PFA) fixed NIH/3T3 cells using PIN1 antibody (81857-1-RR, Clone: 5N20) at dilution of 1:400 and CoraLite®488-Conjugated AffiniPure Goat Anti-Rabbit IgG(H+L), CL594-Phalloidin (red). This data was developed using the same antibody clone with 81857-1-PBS in a different storage buffer formulation.



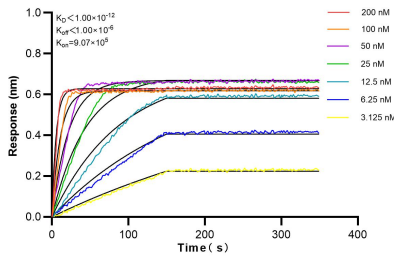
IP result of anti-PIN1 (IP:81857-1-RR, 4 μ g; Detection:81857-1-RR 1:20000) with NIH/3T3 cells lysate 1120 μ g. This data was developed using the same antibody clone with 81857-1-PBS in a different storage buffer formulation.



Immunohistochemical analysis of paraffin-embedded human pancreas cancer tissue slide using 81857-1-RR (PIN1 antibody) at dilution of 1:1000 (under 10x lens). Heat mediated antigen retrieval with Tris-EDTA buffer (pH 9.0). This data was developed using the same antibody clone with 81857-1-PBS in a different storage buffer formulation.



Immunohistochemical analysis of paraffin-embedded human pancreas cancer tissue slide using 81857-1-RR (PIN1 antibody) at dilution of 1:1000 (under 40x lens). Heat mediated antigen retrieval with Tris-EDTA buffer (pH 9.0). This data was developed using the same antibody clone with 81857-1-PBS in a different storage buffer formulation.



Biolayer interferometry (BLI) kinetic assays of 81857-1-RR against Human PIN1 were performed. The affinity constant is below 1 pM.