

For Research Use Only

Calnexin Recombinant antibody, PBS Only



Catalog Number: 81938-1-PBS

Basic Information

Catalog Number: 81938-1-PBS	GenBank Accession Number: BC003552	Purification Method: Protein A purification
Size: 1mg/ml	GeneID (NCBI): 821	CloneNo.: 3K18
Source: Rabbit	UNIPROT ID: P27824	
Isotype: IgG	Full Name: calnexin	
Immunogen Catalog Number: AG0697	Calculated MW: 90 kDa	
	Observed MW: 90 kDa	

Applications

Tested Applications:
WB, IF, IHC, Indirect ELISA

Species Specificity:
Human, Mouse, Rat

Background Information

Calnexin is a molecular chaperone that resides in the endoplasmic reticulum (ER) and participates in the folding and assembly of newly synthesized proteins. Calnexin is highly abundant in ER and is frequently used as an ER marker.

Storage

Storage:
Store at -80°C.

Storage Buffer:
PBS Only

For technical support and original validation data for this product please contact:

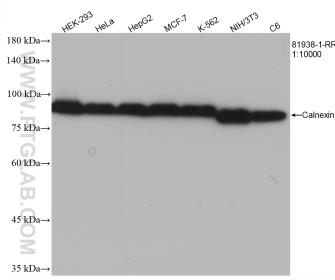
T: 4006900926

E: Proteintech-CN@ptglab.com

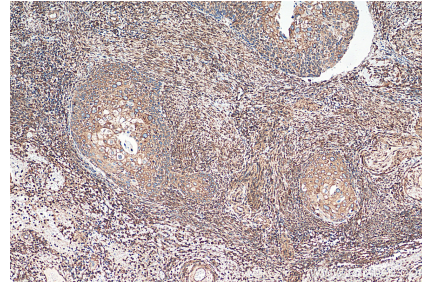
W: ptgcn.com

This product is exclusively available under Proteintech Group brand and is not available to purchase from any other manufacturer.

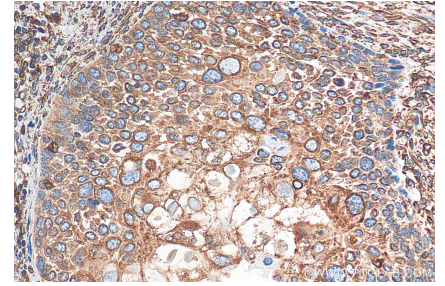
Selected Validation Data



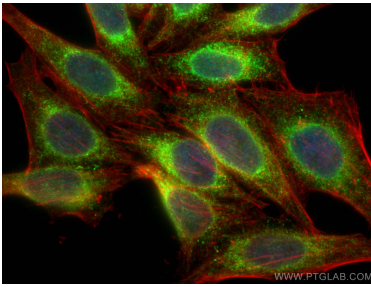
Various lysates were subjected to SDS PAGE followed by western blot with 81938-1-RR (Calnexin antibody) at dilution of 1:10000 incubated at room temperature for 1.5 hours. This data was developed using the same antibody clone with 81938-1-PBS in a different storage buffer formulation.



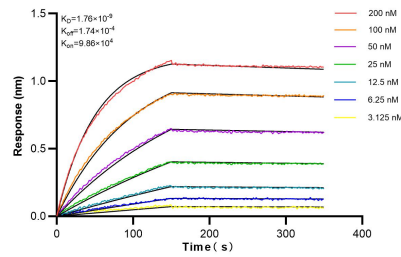
Immunohistochemical analysis of paraffin-embedded human cervical cancer tissue slide using 81938-1-RR (Calnexin antibody) at dilution of 1:500 (under 10x lens). Heat mediated antigen retrieval with Tris-EDTA buffer (pH 9.0). This data was developed using the same antibody clone with 81938-1-PBS in a different storage buffer formulation.



Immunohistochemical analysis of paraffin-embedded human cervical cancer tissue slide using 81938-1-RR (Calnexin antibody) at dilution of 1:500 (under 40x lens). Heat mediated antigen retrieval with Tris-EDTA buffer (pH 9.0). This data was developed using the same antibody clone with 81938-1-PBS in a different storage buffer formulation.



Immunofluorescent analysis of (4% PFA) fixed HepG2 cells using Calnexin antibody (81938-1-RR, Clone: 3K18) at dilution of 1:1000 and CoraLite@488-Conjugated AffiniPure Goat Anti-Rabbit IgG(H+L), CL594-Phalloidin (red). This data was developed using the same antibody clone with 81938-1-PBS in a different storage buffer formulation.



Biolayer interferometry (BLI) kinetic assays of 81938-1-RR against Human Calnexin were performed. The affinity constant is 1.76 nM.