

For Research Use Only

# G3BP2 Recombinant antibody, PBS Only (Capture)



Catalog Number: 82080-4-PBS

## Basic Information

<b>Catalog Number:</b> 82080-4-PBS	<b>GenBank Accession Number:</b> BC011731	<b>Purification Method:</b> Protein A purification
<b>Size:</b> 1mg/ml	<b>GeneID (NCBI):</b> 9908	<b>CloneNo.:</b> 230275D6
<b>Source:</b> Rabbit	<b>UNIPROT ID:</b> Q9UN86	
<b>Isotype:</b> IgG	<b>Full Name:</b> GTPase activating protein (SH3 domain) binding protein 2	
<b>Immunogen Catalog Number:</b> AG9355	<b>Calculated MW:</b> 482aa,54 kDa; 449aa,51 kDa	

## Applications

**Tested Applications:**  
WB, IF, Indirect ELISA, Cytometric bead array

**Species Specificity:**  
Human

## Background Information

### Storage

**Storage:**  
Store at -80°C.

**Storage Buffer:**  
100% PBS pH 7.3

For technical support and original validation data for this product please contact:

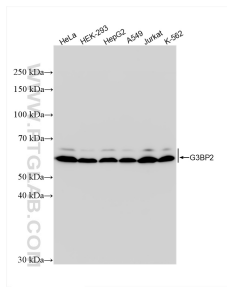
T: 4006900926

E: [Proteintech-CN@ptglab.com](mailto:Proteintech-CN@ptglab.com)

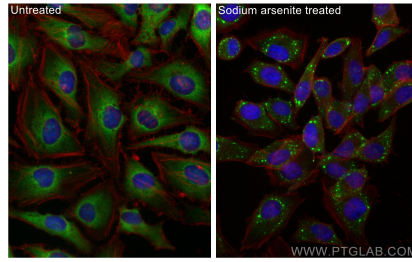
W: [ptgcn.com](http://ptgcn.com)

This product is exclusively available under Proteintech Group brand and is not available to purchase from any other manufacturer.

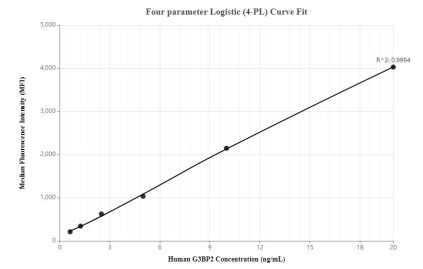
## Selected Validation Data



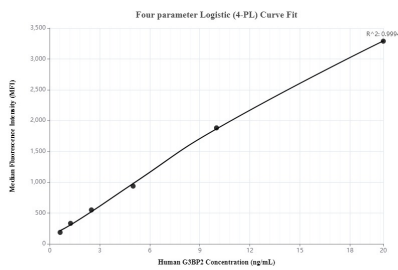
Various lysates were subjected to SDS PAGE followed by western blot with 82080-4-RR (G3BP2 antibody) at dilution of 1:10000 incubated at room temperature for 1.5 hours. This data was developed using the same antibody clone with 82080-4-PBS in a different storage buffer formulation.



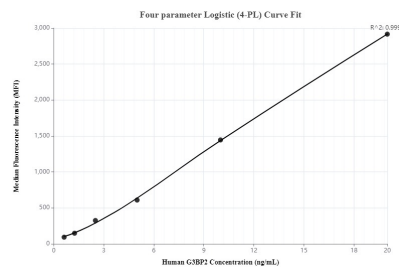
Immunofluorescent analysis of (4% PFA) fixed sodium arsenite treated HeLa cells using G3BP2 antibody (82080-4-RR, Clone: 230275D6) at dilution of 1:1000 and CoraLite®488-Conjugated AffiniPure Goat Anti-Rabbit IgG(H+L) (SA00013-2), CL594-Phalloidin (red). This data was developed using the same antibody clone with 82080-4-PBS in a different storage buffer formulation.



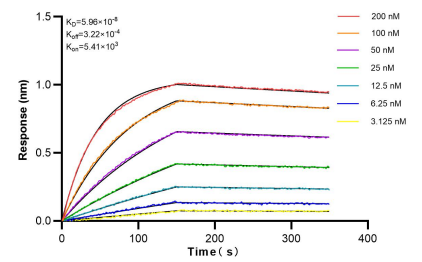
Cytometric bead array standard curve of mP00090-1, G3BP2 Recombinant Matched Antibody Pair, PBS Only. Capture antibody: 82080-4-PBS. Detection antibody: 82080-3-PBS. Standard: Ag9355. Range: 0.625-20 ng/mL.



Cytometric bead array standard curve of mP00090-2, G3BP2 Recombinant Matched Antibody Pair, PBS Only. Capture antibody: 82080-4-PBS. Detection antibody: 82080-5-PBS. Standard: Ag9355. Range: 0.625-20 ng/mL.



Cytometric bead array standard curve of mP00090-3, G3BP2 Recombinant Matched Antibody Pair, PBS Only. Capture antibody: 82080-4-PBS. Detection antibody: 82080-2-PBS. Standard: Ag9355. Range: 0.625-20 ng/mL.



Biolayer interferometry (BLI) kinetic assays of 82080-4-RR against Human G3BP2 were performed. The affinity constant is 59.6 nM.