

For Research Use Only

# G3BP2 Recombinant antibody, PBS Only



Catalog Number: 82080-6-PBS

## Basic Information

Catalog Number:

82080-6-PBS

Size:

1mg/ml

Source:

Rabbit

Isotype:

IgG

Immunogen Catalog Number:

AG9355

GenBank Accession Number:

BC011731

GeneID (NCBI):

9908

UNIPROT ID:

Q9UN86

Full Name:

GTPase activating protein (SH3 domain) binding protein 2

Calculated MW:

482aa,54 kDa; 449aa,51 kDa

Observed MW:

65-70 kDa

Purification Method:

Protein A purification

CloneNo.:

230275G3

## Applications

Tested Applications:

WB, IF, Indirect ELISA

Species Specificity:

Human, mouse

## Background Information

Stress granules (SGs) are cytoplasmic mRNA-protein condensates formed in response to cellular stressors, such as oxidative stress, ultraviolet radiation, and viral infection (1). The Ras-GTPase-activating protein-binding proteins (G3BPs), consisting of G3BP1 and G3BP2, are key nucleating factors essential for SG formation. They function to protect RNAs from harmful conditions. G3BP2 is mainly distributed in the cytoplasm and participates in the formation of stress granules, cell differentiation, proliferation, and signal transduction. Accumulating evidence has demonstrated that aberrant expression of G3BP2 contributes to cancer initiation and progression, such as high expression of G3BP2 increasing cell stemness, metastasis and chemoresistance in breast cancer.

## Storage

Storage:

Store at -80°C.

Storage Buffer:

PBS Only

For technical support and original validation data for this product please contact:

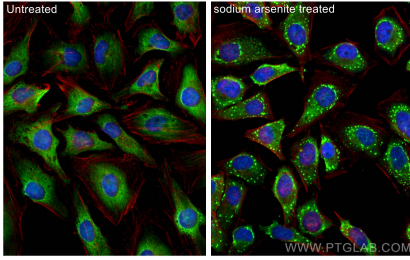
T: 4006900926

E: [Proteintech-CN@ptglab.com](mailto:Proteintech-CN@ptglab.com)

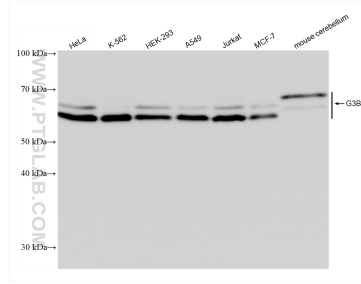
W: [ptgcn.com](http://ptgcn.com)

This product is exclusively available under Proteintech Group brand and is not available to purchase from any other manufacturer.

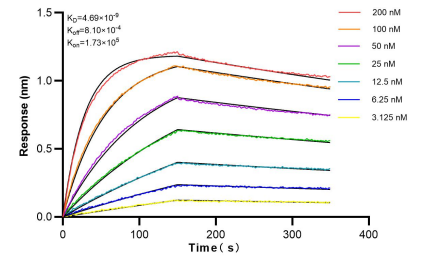
## Selected Validation Data



Immunofluorescent analysis of (4% PFA) fixed sodium arsenite treated HeLa cells using G3BP2 antibody (82080-6-RR, Clone: 230275G3 ) at dilution of 1:1000 and CoraLite® 488-Conjugated AffiniPure Goat Anti-Rabbit IgG(H+L) (SA00013-2), CL594-phalloidin (red). This data was developed using the same antibody clone with 82080-6-PBS in a different storage buffer formulation.



Various lysates were subjected to SDS PAGE followed by western blot with 82080-6-RR (G3BP2 antibody) at dilution of 1:5000 incubated at room temperature for 1.5 hours. This data was developed using the same antibody clone with 82080-6-PBS in a different storage buffer formulation.



Bi-layer interferometry (BLI) kinetic assays of 82080-6-RR against Human G3BP2 were performed. The affinity constant is 4.69 nM.