

For Research Use Only

Cyclin A2 Recombinant antibody, PBS Only



Catalog Number: 82148-1-PBS

Basic Information

Catalog Number: 82148-1-PBS	GenBank Accession Number: BC104783	Purification Method: Protein A purification
Size: 1mg/ml	GeneID (NCBI): 890	CloneNo.: 1C23
Source: Rabbit	UNIPROT ID: P20248	
Isotype: IgG	Full Name: cyclin A2	
Immunogen Catalog Number: AG12765	Calculated MW: 432 aa, 49 kDa	
	Observed MW: 52 kDa	

Applications

Tested Applications:
WB, IP, IHC, IF/ICC, Indirect ELISA

Species Specificity:
Human, mouse, rat

Background Information

Cyclin A2 belongs to the highly conserved cyclin family, whose members are characterized by a dramatic periodicity in protein abundance through the cell cycle. Cyclins function as regulators of CDK kinases. Different cyclins exhibit distinct expression and degradation patterns which contribute to the temporal coordination of each mitotic event. In contrast to cyclin A1, which is present only in germ cells, this cyclin is expressed in all tissues tested. Cyclin A2 binds and activates CDC2 or CDK2 kinases, and thus promotes both cell cycle G1/S and G2/M transitions. Cyclin A2 could be phosphorylated during the G2/M.

Storage

Storage:
Store at -80°C.
The product is shipped with ice packs. Upon receipt, store it immediately at -80°C

Storage Buffer:
PBS Only

For technical support and original validation data for this product please contact:

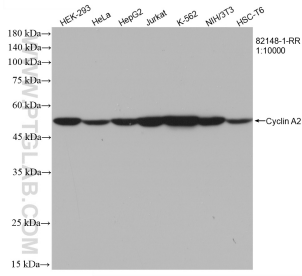
T: 4006900926

E: Proteintech-CN@ptglab.com

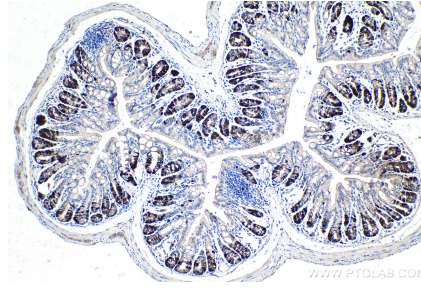
W: ptgcn.com

This product is exclusively available under Proteintech Group brand and is not available to purchase from any other manufacturer.

Selected Validation Data



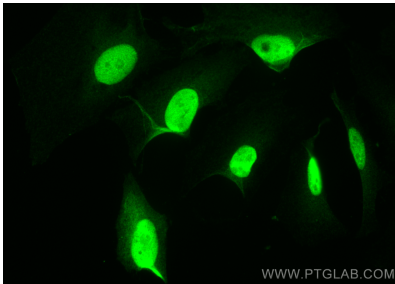
Various lysates were subjected to SDS PAGE followed by western blot with 82148-1-RR (Cyclin A2 antibody) at dilution of 1:10000 incubated at room temperature for 1.5 hours. This data was developed using the same antibody clone with 82148-1-PBS in a different storage buffer formulation.



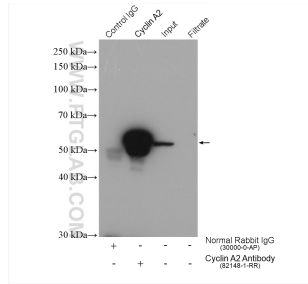
Immunohistochemical analysis of paraffin-embedded mouse colon tissue slide using 82148-1-RR (Cyclin A2 antibody) at dilution of 1:1000 (under 10x lens). Heat mediated antigen retrieval with Tris-EDTA buffer (pH 9.0). This data was developed using the same antibody clone with 82148-1-PBS in a different storage buffer formulation.



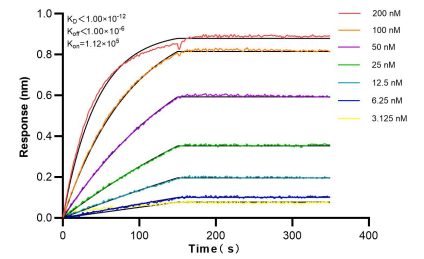
Immunohistochemical analysis of paraffin-embedded rat colon tissue slide using 82148-1-RR (Cyclin A2 antibody) at dilution of 1:1000 (under 10x lens). Heat mediated antigen retrieval with Tris-EDTA buffer (pH 9.0). This data was developed using the same antibody clone with 82148-1-PBS in a different storage buffer formulation.



Immunofluorescent analysis of (4% PFA) fixed HeLa cells using Cyclin A2 antibody (82148-1-RR, Clone: 1C23) at dilution of 1:1000 and CoraLite®488-Conjugated AffiniPure Goat Anti-Rabbit IgG(H+L). This data was developed using the same antibody clone with 82148-1-PBS in a different storage buffer formulation.



IP result of anti-Cyclin A2 (IP:82148-1-RR, 4ug; Detection:82148-1-RR 1:3000) with HeLa cells lysate 1720 ug. This data was developed using the same antibody clone with 82148-1-PBS in a different storage buffer formulation.



Bi-layer interferometry (BLI) kinetic assays of 82148-1-RR against Human Cyclin A2 were performed. The affinity constant is below 1 pM.