

For Research Use Only

S100 Beta Recombinant antibody

Catalog Number: 82271-8-RR



Basic Information

Catalog Number:

82271-8-RR

Size:

1000 µg/ml

Source:

Rabbit

Isotype:

IgG

Immunogen Catalog Number:

AG7440

GenBank Accession Number:

BC001766

GeneID (NCBI):

6285

UNIPROT ID:

P04271

Full Name:

S100 calcium binding protein B

Calculated MW:

11 kDa

Observed MW:

11 kDa

Purification Method:

Protein A purification

CloneNo.:

1E2

Recommended Dilutions:

WB 1:2000-1:10300

Applications

Tested Applications:

WB, ELISA

Species Specificity:

Human, rat

Positive Controls:

WB : C6 cells, A375 cells, rat brain tissue

Background Information

S100B is a member of the S100 family of proteins containing 2 EF-hand calcium-binding motifs and has been implicated in the regulation of cellular activities such as metabolism, motility and proliferation. In the nervous system, S100B is constitutively released by astrocytes into the extracellular space and at nanomolar concentrations, it can promote neurite outgrowth and protect neurons against oxidative stress. Within the central nervous system (CNS), S100B is thought to be a marker for astroglial activation, linking astrocyte dysfunction to schizophrenia. In addition to astrocytes, S100B is released from many cell types, such as, adipocytes, chondrocytes, cardiomyocytes and lymphocytes. Serum S100B represents a new biomarker for mood disorders.

Storage

Storage:

Store at -20°C. Stable for one year after shipment.

Storage Buffer:

PBS with 0.02% sodium azide and 50% glycerol pH 7.3.

Aliquoting is unnecessary for -20°C storage

For technical support and original validation data for this product please contact:

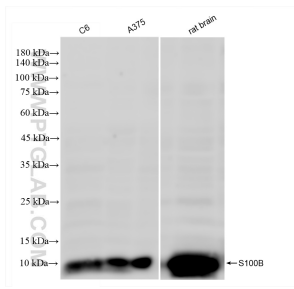
T: 4006900926

E: Proteintech-CN@ptglab.com

W: ptgcn.com

This product is exclusively available under Proteintech Group brand and is not available to purchase from any other manufacturer.

Selected Validation Data



Various lysates were subjected to SDS PAGE followed by western blot with 82271-8-RR (S100B antibody) at dilution of 1:5150 incubated at room temperature for 1.5 hours.