

For Research Use Only

# Mouse Bcl2 Recombinant antibody, PBS Only



Catalog Number: 82469-6-PBS

## Basic Information

Catalog Number: 82469-6-PBS	GenBank Accession Number: NM-009741	Purification Method: Protein A purification
Size: 1 mg/ml	GeneID (NCBI): 12043	CloneNo.: 240571H5
Source: Rabbit	UNIPROT ID: P10417	
Isotype: IgG	Full Name: B-cell leukemia/lymphoma 2	
Immunogen Catalog Number: AG24260	Calculated MW: 26 kDa	

## Applications

Tested Applications:  
WB, FC (Intra), ELISA  
Species Specificity:  
mouse

## Background Information

### Storage

Storage:  
Store at -80°C.  
The product is shipped with ice packs. Upon receipt, store it immediately at -80°C  
Storage Buffer:  
PBS Only

For technical support and original validation data for this product please contact:

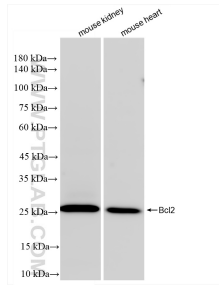
T: 4006900926

E: [Proteintech-CN@ptglab.com](mailto:Proteintech-CN@ptglab.com)

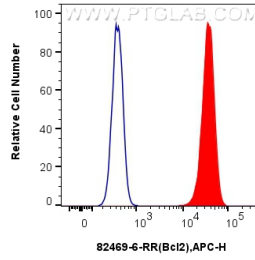
W: [ptgcn.com](http://ptgcn.com)

This product is exclusively available under Proteintech Group brand and is not available to purchase from any other manufacturer.

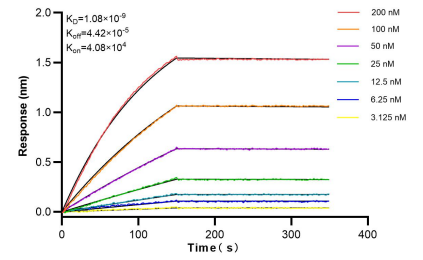
## Selected Validation Data



Various lysates were subjected to SDS PAGE followed by western blot with 82469-6-RR (Bcl2 antibody) at dilution of 1:5000 incubated at room temperature for 1.5 hours. This data was developed using the same antibody clone with 82469-6-PBS in a different storage buffer formulation.



$1 \times 10^6$  NIH/3T3 cells were intracellularly stained with 0.25  $\mu$ g Bcl2 Recombinant antibody (82469-6-RR, Clone:240571H5) and APC-Conjugated AffiniPure Goat Anti-Rabbit IgG(H+L)(red), or 0.25  $\mu$ g Isotype Control (blue). Cells were fixed with 4% PFA and permeabilized with Flow Cytometry Perm Buffer (PF00011-C). This data was developed using the same antibody clone with 82469-6-PBS in a different storage buffer formulation.



Biolayer interferometry (BLI) kinetic assays of 82469-6-RR against Mouse Bcl2 were performed. The affinity constant is 1.08 nM.