

For Research Use Only

# SPHK1 Recombinant antibody, PBS Only

Catalog Number:82609-1-PBS



## Basic Information

<b>Catalog Number:</b> 82609-1-PBS	<b>GenBank Accession Number:</b> BC008040	<b>Purification Method:</b> Protein A purification
<b>Size:</b> 1mg/ml	<b>GeneID (NCBI):</b> 8877	<b>CloneNo.:</b> 2K12
<b>Source:</b> Rabbit	<b>UNIPROT ID:</b> Q9NYA1	
<b>Isotype:</b> IgG	<b>Full Name:</b> sphingosine kinase 1	
<b>Immunogen Catalog Number:</b> AG1051	<b>Calculated MW:</b> 43 kDa	
	<b>Observed MW:</b> 42 kDa	

## Applications

**Tested Applications:**  
WB, IF/ICC, Indirect ELISA

**Species Specificity:**  
human, mouse

## Background Information

SPHK(Sphingosine kinase 1) is also named as SPHK, SPK.It catalyzes the phosphorylation of sphingosine to form sphingosine 1-phosphate (SPP), a lipid mediator with both intra- and extracellular functions and is precariously perched at the balance point between progrowth and pro-death signalling in the cell.Endogenous SPHK1 purified from placenta has identical enzymatic characteristics, suggesting posttranslational modification does not effect functional properties(PMID:10947957).It has 2 isoforms produced by alternative splicing and can form the oligomeric structure(PMID:22335554).

## Storage

**Storage:**  
Store at -80°C.  
**The product is shipped with ice packs. Upon receipt, store it immediately at -80°C**

**Storage Buffer:**  
PBS Only

For technical support and original validation data for this product please contact:

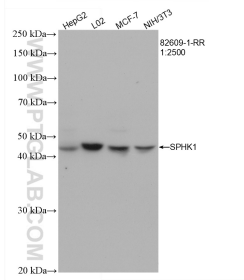
T: 4006900926

E: Proteintech-CN@ptglab.com

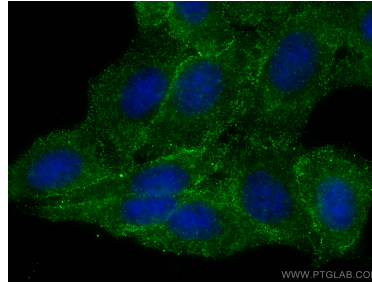
W: ptgcn.com

**This product is exclusively available under Proteintech Group brand and is not available to purchase from any other manufacturer.**

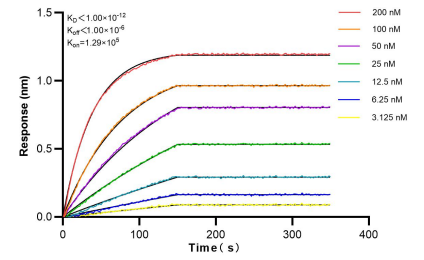
## Selected Validation Data



Various lysates were subjected to SDS PAGE followed by western blot with 82609-1-RR (SPHK1 antibody) at dilution of 1:2500 incubated at room temperature for 1.5 hours. This data was developed using the same antibody clone with 82609-1-PBS in a different storage buffer formulation.



Immunofluorescent analysis of (-20°C Ethanol) fixed HepG2 cells using SPHK1 antibody (82609-1-RR, Clone: 2K12) at dilution of 1:400 and CoraLite®488-Conjugated AffiniPure Goat Anti-Rabbit IgG(H+L). This data was developed using the same antibody clone with 82609-1-PBS in a different storage buffer formulation.



Bi-layer interferometry (BLI) kinetic assays of 82609-1-RR against Human SPHK1 were performed. The affinity constant is below 1 pM.