

For Research Use Only

# P21 Recombinant antibody, PBS Only



Catalog Number: 82669-2-PBS

## Basic Information

Catalog Number:

82669-2-PBS

Size:

1 mg/ml

Source:

Rabbit

Isotype:

IgG

Immunogen Catalog Number:

AG0368

GenBank Accession Number:

BC000275

GeneID (NCBI):

1026

UNIPROT ID:

P38936

Full Name:

cyclin-dependent kinase inhibitor 1A  
(p21, Cip1)

Calculated MW:

18 kDa

Observed MW:

21 kDa

Purification Method:

Protein A purification

CloneNo.:

3N14

## Applications

Tested Applications:

WB,IP,Indirect ELISA,IF

Species Specificity:

Human, mouse

## Background Information

CDKN1A (p21, CIP1, WAF1) is a cyclin-dependent kinase inhibitor. CDKN1A binds to and inhibits the activity of cyclin-CDK2 or -CDK4 complexes, and thus functions as a regulator of cell cycle progression at the G1 phase. The expression of CDKN1A is induced by wild-type but not mutant p53 protein, through which CDKN1A mediates the p53-dependent cell cycle G1 phase arrest in response to a variety of stress stimuli. CDKN1A can interact with proliferating cell nuclear antigen (PCNA), and plays a regulatory role in S phase DNA replication and DNA damage repair. CDKN1A was reported to be specifically cleaved by CASP3-like caspases, which thus leads to a dramatic activation of CDK2, and may be instrumental in the execution of apoptosis following caspase activation. Two alternatively spliced variants, which encode an identical protein, have been reported.

## Storage

Storage:

Store at -80°C.

Storage Buffer:

PBS Only

For technical support and original validation data for this product please contact:

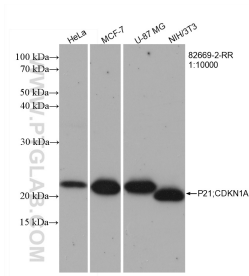
T: 4006900926

E: [Proteintech-CN@ptglab.com](mailto:Proteintech-CN@ptglab.com)

W: [ptgcn.com](http://ptgcn.com)

This product is exclusively available under Proteintech Group brand and is not available to purchase from any other manufacturer.

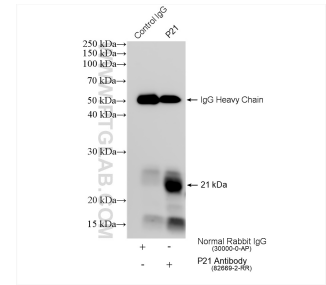
## Selected Validation Data



Various lysates were subjected to SDS PAGE followed by western blot with 82669-2-RR (P21;CDKN1A antibody) at dilution of 1:10000 incubated at room temperature for 1.5 hours. This data was developed using the same antibody clone with 82669-2-PBS in a different storage buffer formulation.



Immunofluorescent analysis of (4% PFA) fixed MCF-7 cells using P21 antibody (82669-2-RR, Clone: 3N14 ) at dilution of 1:2000 and CoraLite® 488-Conjugated AffiniPure Goat Anti-Rabbit IgG(H+L), CL594-Phalloidin (red). This data was developed using the same antibody clone with 82669-2-PBS in a different storage buffer formulation.



IP result of anti-P21 (IP:82669-2-RR, 4ug; Detection:82669-2-RR 1:800) with MCF-7 cells lysate 760 ug. This data was developed using the same antibody clone with 82669-2-PBS in a different storage buffer formulation.