

For Research Use Only

# INPP5E Recombinant antibody

Catalog Number: 82689-3-RR



## Basic Information

<b>Catalog Number:</b> 82689-3-RR	<b>GenBank Accession Number:</b> BC028032	<b>Purification Method:</b> Protein A purification
<b>Size:</b> 1000 µg/ml	<b>GeneID (NCBI):</b> 56623	<b>CloneNo.:</b> 1E7
<b>Source:</b> Rabbit	<b>UNIPROT ID:</b> Q9NRR6	<b>Recommended Dilutions:</b> IF/ICC 1:200-1:800
<b>Isotype:</b> IgG	<b>Full Name:</b> inositol polyphosphate-5-phosphatase, 72 kDa	
<b>Immunogen Catalog Number:</b> AG30305	<b>Calculated MW:</b> 644 aa, 70 kDa	
	<b>Observed MW:</b> 64-66 kDa	

## Applications

<b>Tested Applications:</b> IF/ICC, ELISA	<b>Positive Controls:</b> IF/ICC : Starvation treated hTERT-RPE1 cells,
<b>Species Specificity:</b> human	

## Background Information

INPP5E(72 kDa inositol polyphosphate 5-phosphatase) converts phosphatidylinositol 3,4,5-trisphosphate (PtdIns 3,4,5-P3) to PtdIns-P2. In mouse, highest protein expression was in brain, heart, and testis, with lower expression in thymus and lung, and very little expression in kidney, spleen, and liver(PMID:10764818). Defects in INPP5E are the cause of Joubert syndrome type 1 (JBTS1) and mental retardation-truncal obesity-retinal dystrophy-micropenis (MORMS)(PMID:19668215). It has 2 isoforms with the molecular mass of 66 kDa and 70 kDa.

## Storage

**Storage:**  
Store at -20°C. Stable for one year after shipment.  
**Storage Buffer:**  
PBS with 0.02% sodium azide and 50% glycerol pH 7.3.  
Aliquoting is unnecessary for -20°C storage

For technical support and original validation data for this product please contact:

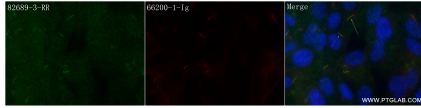
T: 4006900926

E: [Proteintech-CN@ptglab.com](mailto:Proteintech-CN@ptglab.com)

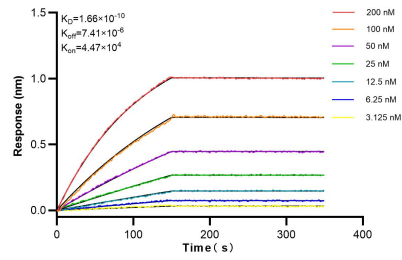
W: [ptgcn.com](http://ptgcn.com)

**This product is exclusively available under Proteintech Group brand and is not available to purchase from any other manufacturer.**

## Selected Validation Data



Immunofluorescent analysis of (4% PFA) fixed Starvation treated hTERT-RPE1 cells using INPP5E antibody (82689-3-RR, Clone: 1E7) at dilution of 1:400 and CoraLite@488-Conjugated AffiniPure Goat Anti-Rabbit IgG(H+L) (SA00013-2), Acetyl-Tubulin (Lys40) antibody (66200-1-Ig, Clone: 7E5H8, red).



Biolayer interferometry (BLI) kinetic assays of 82689-3-RR against Human INPP5E were performed. The affinity constant is 0.166 nM.