

For Research Use Only

# IL-1 Beta Recombinant antibody, PBS Only (Capture)



Catalog Number: 82696-6-PBS

## Basic Information

<b>Catalog Number:</b> 82696-6-PBS	<b>GenBank Accession Number:</b> BC008678	<b>Purification Method:</b> Protein A purification
<b>Size:</b> 1mg/ml	<b>GeneID (NCBI):</b> 3553	<b>CloneNo.:</b> 319
<b>Source:</b> Rabbit	<b>ENSEMBL Gene ID:</b> ENSG00000125538	
<b>Isotype:</b> IgG	<b>UNIPROT ID:</b> P01584	
	<b>Full Name:</b> interleukin 1, beta	
	<b>Calculated MW:</b> 269 aa, 31 kDa	
	<b>Observed MW:</b> 30-35 kDa	

## Applications

**Tested Applications:**  
WB, Indirect ELISA, Cytometric bead array

**Species Specificity:**  
Human

## Background Information

Interleukin-1 is a pro-inflammatory cytokine with multiple biological effects. The IL-1 gene family encodes three proteins: IL-1 $\alpha$ , IL-1 $\beta$  and their naturally occurring inhibitor IL-1RN. IL-1 Beta(IL-1 $\beta$ ), mainly produced by blood monocytes and tissue macrophages, has been implicated in mediating both acute and chronic inflammation. IL-1 $\beta$  is known to be involved in a variety of cellular activities, including cell proliferation, differentiation and apoptosis. IL-1 $\beta$  is emerging as a key mediator of carcinogenesis that characterizes host-environment interactions. Human IL-1 $\beta$  is synthesized as a 31 kDa precursor. To gain activity, the precursor must be cleaved by caspase-1 between Asp116 and Ala117 to yield a 17 kDa mature form.

## Storage

**Storage:**  
Store at -80°C.

**Storage Buffer:**  
PBS Only

For technical support and original validation data for this product please contact:

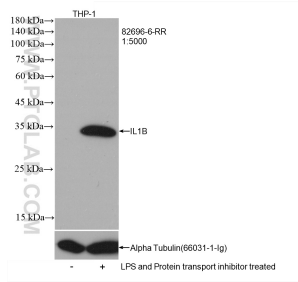
T: 4006900926

E: [Proteintech-CN@ptglab.com](mailto:Proteintech-CN@ptglab.com)

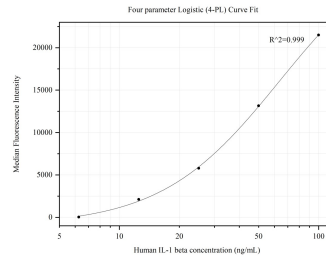
W: [ptgcn.com](http://ptgcn.com)

This product is exclusively available under Proteintech Group brand and is not available to purchase from any other manufacturer.

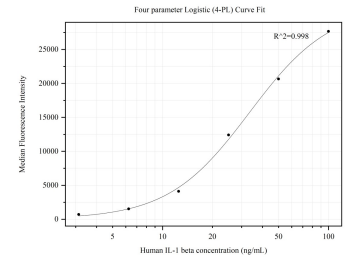
## Selected Validation Data



LPS and Protein transport inhibitor treated THP-1 cells were subjected to SDS PAGE followed by western blot with 82696-6-RR (IL1B antibody) at dilution of 1:5000 incubated at room temperature for 1.5 hours. This data was developed using the same antibody clone with 82696-6-PBS in a different storage buffer formulation.



Cytometric bead array standard curve of MP80001-1, IL-1 beta Hybrid Matched Antibody Pair - BSA and Azide free. Capture antibody: 82696-6-RR. Detection antibody: 65276-1-PBS. Standard:HZ-1164. Range: 6.25-100 ng/mL



Cytometric bead array standard curve of MP80001-2, IL-1 beta Hybrid Matched Antibody Pair - BSA and Azide free. Capture antibody: 82696-6-RR. Detection antibody: 68767-1-PBS. Standard:HZ-1164. Range:3.125-100 ng/mL