

For Research Use Only

Cyclin E Recombinant antibody, PBS Only (Detector)



Catalog Number: 82700-8-PBS

Basic Information

| | | |
|-------------------------------------|---------------------------------------|--|
| Catalog Number: 82700-8-PBS | GenBank Accession Number: BC035498 | Purification Method: Protein A purification |
| Size: 1 mg/ml | GeneID (NCBI): 898 | CloneNo.: 240136G9 |
| Source: Rabbit | UNIPROT ID: P24864 | |
| Isotype: IgG | Full Name: cyclin E1 | |
| Immunogen Catalog Number: AG2110 | Calculated MW: 410 aa, 47 kDa | |

Applications

Tested Applications:
IF, Indirect ELISA, Cytometric bead array

Species Specificity:
Human

Background Information

Storage

Storage:
Store at -80°C.

Storage Buffer:
PBS Only

For technical support and original validation data for this product please contact:

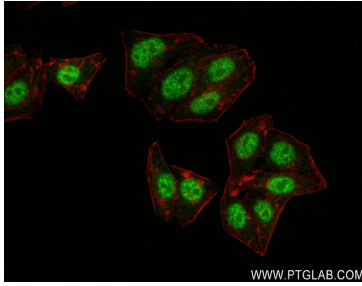
T: 4006900926

E: Proteintech-CN@ptglab.com

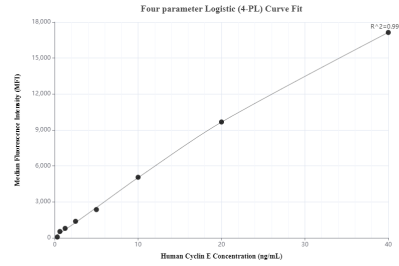
W: ptgcn.com

This product is exclusively available under Proteintech Group brand and is not available to purchase from any other manufacturer.

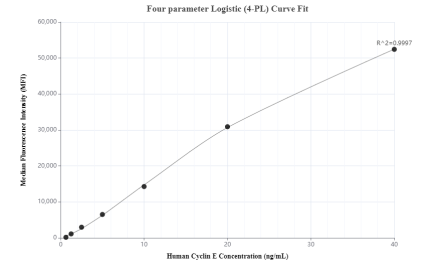
Selected Validation Data



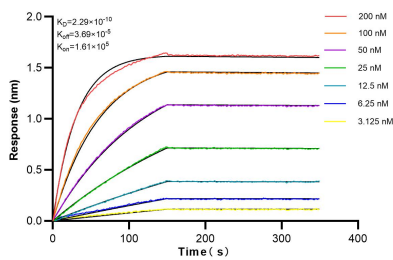
Immunofluorescent analysis of (4% PFA) fixed HepG2 cells using Cyclin E antibody (82700-8-RR, Clone: 240136G9) at dilution of 1:300 and CoraLite®488-Conjugated AffiniPure Goat Anti-Rabbit IgG(H+L) (SA00013-2), CL594-Phalloidin (red). This data was developed using the same antibody clone with 82700-8-PBS in a different storage buffer formulation.



Cytometric bead array standard curve of MP00361-2, Cyclin E Recombinant Matched Antibody Pair, PBS Only. Capture antibody: 82700-6-PBS. Detection antibody: 82700-8-PBS. Standard: Ag2110. Range: 0.313-40 ng/mL.



Cytometric bead array standard curve of MP00361-3, Cyclin E Recombinant Matched Antibody Pair, PBS Only. Capture antibody: 82700-5-PBS. Detection antibody: 82700-8-PBS. Standard: Ag2110. Range: 0.625-40 ng/mL.



Biolayer interferometry (BLI) kinetic assays of 82700-8-RR against Human Cyclin E were performed. The affinity constant is 0.229 nM.