

For Research Use Only

Cyclin E Recombinant antibody

Catalog Number: 82700-8-RR



Basic Information

Catalog Number: 82700-8-RR	GenBank Accession Number: BC035498	Purification Method: Protein A purification
Size: 1000 µg/ml	GeneID (NCBI): 898	CloneNo.: 240136G9
Source: Rabbit	UNIPROT ID: P24864	Recommended Dilutions: IF 1:150-1:600
Isotype: IgG	Full Name: cyclin E1	
Immunogen Catalog Number: AG2110	Calculated MW: 410 aa, 47 kDa	
	Observed MW: 47 kDa	

Applications

Tested Applications: IF/ICC, ELISA	Positive Controls: IF : HepG2 cells,
Species Specificity: Human	

Background Information

Cyclin E1 (CCNE1) is a member of the highly conserved cyclin family, whose members are characterized by a dramatic periodicity in protein abundance through the cell cycle. CCNE1, an essential cyclin activating Cdk2, regulates the G1-S phase transition of the mammalian cell division cycle. Its timing expression plays a direct role in the initiation of DNA replication, the control of histone biosynthesis, and the centrosome cycle. CCNE1 is associated with disease progression in various malignancies and is associated clinically with poor prognosis. Two bands of Cyclin E1 were expressed in U2OS and MDA-MB-231 cells (PMID:9858585, PMID: 24112607).

Storage

Storage:
Store at -20°C. Stable for one year after shipment.
Storage Buffer:
PBS with 0.02% sodium azide and 50% glycerol pH 7.3.
Aliquoting is unnecessary for -20°C storage

For technical support and original validation data for this product please contact:

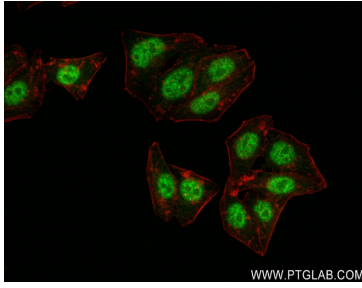
T: 4006900926

E: Proteintech-CN@ptglab.com

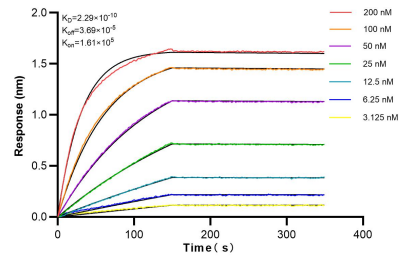
W: ptgcn.com

This product is exclusively available under Proteintech Group brand and is not available to purchase from any other manufacturer.

Selected Validation Data



Immunofluorescent analysis of (4% PFA) fixed HepG2 cells using Cyclin E antibody (82700-8-RR, Clone: 240136G9) at dilution of 1:300 and CoraLite®488-Conjugated AffiniPure Goat Anti-Rabbit IgG(H+L) (SA00013-2), CL594-Phalloidin (red).



Biolayer interferometry (BLI) kinetic assays of 82700-8-RR against Human Cyclin E were performed. The affinity constant is 0.229 nM.