

For Research Use Only

GM130;GOLGA2 Recombinant antibody, PBS Only



Catalog Number:82705-8-PBS

Basic Information

Catalog Number: 82705-8-PBS	GenBank Accession Number: BC014188	Purification Method: Protein A purification
Size: 1 mg/ml	GeneID (NCBI): 2801	CloneNo.: 1M17
Source: Rabbit	UNIPROT ID: Q08379	
Isotype: IgG	Full Name: golgi autoantigen, golgin subfamily a, 2	
Immunogen Catalog Number: AG1848	Calculated MW: 111 kDa	
	Observed MW: 130-140 kDa	

Applications

Tested Applications:
WB,Indirect ELISA,IF

Species Specificity:
Human, rat

Background Information

GOLGA2, also known as GM130, is a 130 kDa cis-Golgi matrix protein which is one component of the detergent and salt resistant Golgi matrix. It is a peripheral membrane protein highly bound to Golgi membrane and localized mainly at the cytoplasmic face of cis-Golgi membrane. Together with its interacting partner proteins, including p115, giantin, GRASP65, and Rab GTPase, GOLGA2/GM130 is involved in the regulation of ER-to-Golgi transport and also in the maintenance of the Golgi structure. Emerging evidence suggest that the GOLGA2/GM130 has potential roles in the control of glycosylation, cell cycle progression, and higher order cell functions such as cell polarization and directed cell migration. (PMID: 20197635)

Storage

Storage:
Store at -80°C.

Storage Buffer:
PBS Only

For technical support and original validation data for this product please contact:

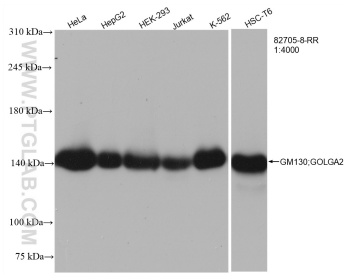
T: 4006900926

E: Proteintech-CN@ptglab.com

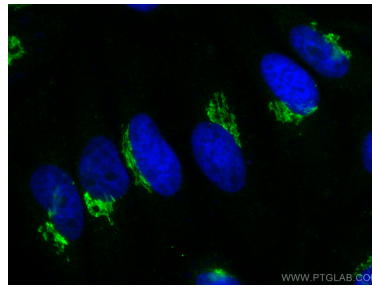
W: ptgcn.com

This product is exclusively available under Proteintech Group brand and is not available to purchase from any other manufacturer.

Selected Validation Data



Various lysates were subjected to SDS PAGE followed by western blot with 82705-8-RR (GM130;GOLGA2 antibody) at dilution of 1:4000 incubated at room temperature for 1.5 hours. This data was developed using the same antibody clone with 82705-8-PBS in a different storage buffer formulation.



Immunofluorescent analysis of (4% PFA) fixed HeLa cells using GM130;GOLGA2 antibody (82705-8-RR, Clone: 1M17) at dilution of 1:400 and CoraLite®488-Conjugated AffiniPure Goat Anti-Rabbit IgG(H+L). This data was developed using the same antibody clone with 82705-8-PBS in a different storage buffer formulation.