

For Research Use Only

# Cleaved Caspase 3 Recombinant antibody



Catalog Number: 82707-13-RR

## Basic Information

Catalog Number:

82707-13-RR

Size:

1000  $\mu$ g/ml

Source:

Rabbit

Isotype:

IgG

GenBank Accession Number:

NM\_032991

GeneID (NCBI):

836

UNIPROT ID:

P42574

Full Name:

caspase 3, apoptosis-related cysteine peptidase

Calculated MW:

32 kDa

Observed MW:

17 kDa, 19 kDa

Purification Method:

Protein A purification

CloneNo.:

230527B2

Recommended Dilutions:

WB 1:5000-1:50000

IF 1:125-1:500

## Applications

Tested Applications:

WB, IF/ICC, ELISA

Species Specificity:

Human

Positive Controls:

WB : Staurosporine treated Jurkat cells,

IF : HeLa cells,

## Background Information

Caspases, a family of endoproteases, are critical players in cell regulatory networks controlling inflammation and cell death. Initiator caspases (caspase-2, -8, -9, -10, -11, and -12) cleave and activate downstream effector caspases (caspase-3, -6, and -7), which in turn execute apoptosis by cleaving targeted cellular proteins. Caspase 3 plays a key role in the activation of sterol regulatory element binding proteins (SREBPs) between the basic helix-loop-helix leucine zipper domain and the membrane attachment domain. Caspase 3 can form heterocomplex with other proteins. This antibody can recognize p17 and p19 fragment of Caspase 3. This antibody is specific for cleaved caspase 3, and does not recognize full length caspase-3. The cleaved P17 and P19 fragment might form complex and shows at around 30-35 kDa by western blot (PMID: 25501826).

## Storage

Storage:

Store at -20°C. Stable for one year after shipment.

Storage Buffer:

PBS with 0.02% sodium azide and 50% glycerol pH 7.3.

Aliquoting is unnecessary for -20°C storage

For technical support and original validation data for this product please contact:

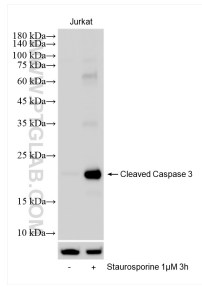
T: 4006900926

E: Proteintech-CN@ptglab.com

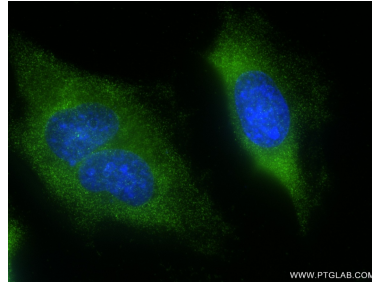
W: ptgcn.com

This product is exclusively available under Proteintech Group brand and is not available to purchase from any other manufacturer.

## Selected Validation Data



Various lysates were subjected to SDS PAGE followed by western blot with 82707-13-RR (Cleaved Caspase 3; P17 antibody) at dilution of 1:10000 incubated at room temperature for 1.5 hours.



Immunofluorescent analysis of (-20°C Ethanol) fixed HeLa cells using Cleaved Caspase 3 antibody (82707-13-RR, Clone: 230527B2 ) at dilution of 1:250 and CoraLite®488-Conjugated AffiniPure Goat Anti-Mouse IgG(H+L) (SA00013-1).