

For Research Use Only

Integrin beta-1 Recombinant antibody



Catalog Number: 82729-3-RR

Basic Information

Catalog Number: 82729-3-RR	GenBank Accession Number: BC020057	Purification Method: Protein A purification
Size: 1000 µg/ml	GeneID (NCBI): 3688	CloneNo.: 1K20
Source: Rabbit	ENSEMBL Gene ID: ENSG00000150093	Recommended Dilutions: WB 1:5000-1:50000
Isotype: IgG	UNIPROT ID: P05556	
Immunogen Catalog Number: AG3078	Full Name: integrin, beta 1 (fibronectin receptor, beta polypeptide, antigen CD29 includes MDF2, MSK12)	
	Calculated MW: 88 kDa	
	Observed MW: 110-140 kDa	

Applications

Tested Applications: WB, ELISA	Positive Controls:
Species Specificity: Human	WB: HT-1080 cells, HeLa cells, A431 cells, U-87 MG cells, HCT 116 cells

Background Information

Integrin beta-1 (ITGB1), also named as CD29, is a single chain type I glycoprotein that is expressed in a heterodimeric complex with one of six distinct α subunits, comprising the very late activation antigen (VLA) subfamily of adhesion receptors. It is one of the essential surface molecules expressed on human MSC from bone marrow and other sources. The β 1 subunit is also broadly expressed on lymphocytes and monocytes, weakly expressed on granulocytes, and not expressed on erythrocytes. These receptors are involved in a variety of cell-cell and cell-matrix interactions.

Storage

Storage:
Store at -20°C. Stable for one year after shipment.
Storage Buffer:
PBS with 0.02% sodium azide and 50% glycerol pH 7.3.
Aliquoting is unnecessary for -20°C storage

For technical support and original validation data for this product please contact:

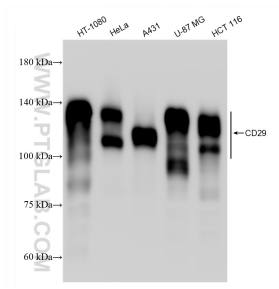
T: 4006900926

E: Proteintech-CN@ptglab.com

W: ptgcn.com

This product is exclusively available under Proteintech Group brand and is not available to purchase from any other manufacturer.

Selected Validation Data



Various lysates were subjected to SDS PAGE followed by western blot with 82729-3-RR (Integrin beta-1 antibody) at dilution of 1:20000 incubated at room temperature for 1.5 hours.