

For Research Use Only

SERPING1 Recombinant antibody

Catalog Number: 82731-1-RR



Basic Information

Catalog Number: 82731-1-RR	GenBank Accession Number: BC011171	Purification Method: Protein A purification
Size: 500 µg/ml	GeneID (NCBI): 710	CloneNo.: 3H7
Source: Rabbit	UNIPROT ID: P05155	Recommended Dilutions: WB 1:5000-1:50000
Isotype: IgG	Full Name: serpin peptidase inhibitor, clade G (C1 inhibitor), member 1	
Immunogen Catalog Number: AG2819	Calculated MW: 500 aa, 55 kDa	
	Observed MW: 100 kDa	

Applications

Tested Applications: WB, ELISA	Positive Controls: WB : human plasma,
Species Specificity: Human	

Background Information

SERPING1, also known as C1 Inhibitor (C1INH), is a member of the Serine proteinase inhibitor family. Its main function is the inhibition of the complement system to prevent spontaneous activation. It inhibits activated C1r and C1s of the first complement component and thus regulates complement activation. Deficiency of this protein is associated with hereditary angioneurotic oedema (HANE). C1INH is the most heavily glycosylated plasma protein. Of its 95-105 kDa apparent molecular mass, the protein moiety of 500 aa accounts for only 55 kDa. The native 105 kDa form of C1INH could be cleaved into 60-65 kDa fragments.

Storage

Storage:
Store at -20°C. Stable for one year after shipment.
Storage Buffer:
PBS with 0.02% sodium azide and 50% glycerol pH 7.3.
Aliquoting is unnecessary for -20°C storage

For technical support and original validation data for this product please contact:

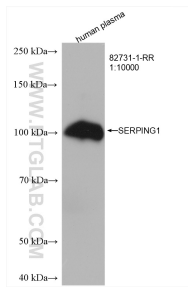
T: 4006900926

E: Proteintech-CN@ptglab.com

W: ptgcn.com

This product is exclusively available under Proteintech Group brand and is not available to purchase from any other manufacturer.

Selected Validation Data



human plasma were subjected to SDS PAGE followed by western blot with 82731-1-RR (SERPING1 antibody) at dilution of 1:10000 incubated at room temperature for 1.5 hours.