

For Research Use Only

SERPINE2 Recombinant antibody, PBS Only



Catalog Number: 82732-5-PBS

Basic Information

Catalog Number:

82732-5-PBS

Size:

1mg/ml

Source:

Rabbit

Isotype:

IgG

Immunogen Catalog Number:

AG1830

GenBank Accession Number:

BC015663

GeneID (NCBI):

5270

UNIPROT ID:

P07093

Full Name:

serpin peptidase inhibitor, clade E
(nexin, plasminogen activator
inhibitor type 1), member 2

Calculated MW:

44 kDa

Observed MW:

44-50 kDa

Purification Method:

Protein A purification

CloneNo.:

5016

Applications

Tested Applications:

Indirect ELISA, WB

Species Specificity:

rat, mouse, human

Background Information

SERPINE2 also called protease nexin-1 or glial-derived neurite promoting factor, is a member of the serine protease inhibitor (SERPIN) superfamily. It would be a potent inhibitor of the urokinase-plasminogen activator (uPA), tissue-type PA (tPA), thrombin, trypsin, factor X_{ia}, and prostasin. SERPINE2 is widely expressed in various tissues, including endothelial cells, fibroblasts, smooth muscle cells, tumor cells, glial cells, neurons, and placental cells.

Storage

Storage:

Store at -80°C.

The product is shipped with ice packs. Upon receipt, store it immediately at -80°C

Storage Buffer:

PBS Only

For technical support and original validation data for this product please contact:

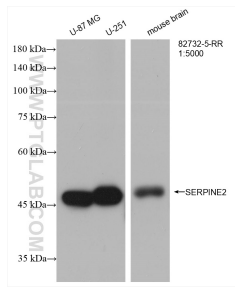
T: 4006900926

E: Proteintech-CN@ptglab.com

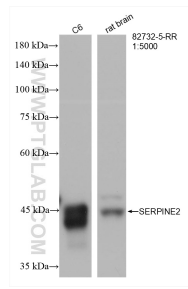
W: ptgcn.com

This product is exclusively available under Proteintech Group brand and is not available to purchase from any other manufacturer.

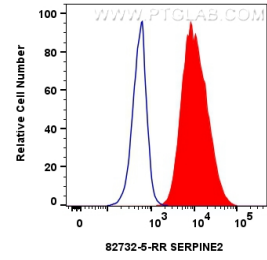
Selected Validation Data



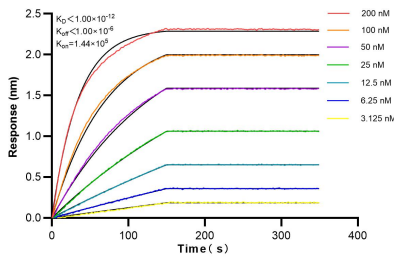
Various lysates were subjected to SDS PAGE followed by western blot with 82732-5-RR (SERPINE2 antibody) at dilution of 1:5000 incubated at room temperature for 1.5 hours. This data was developed using the same antibody clone with 82732-5-PBS in a different storage buffer formulation.



Various lysates were subjected to SDS PAGE followed by western blot with 82732-5-RR (SERPINE2 antibody) at dilution of 1:5000 incubated at room temperature for 1.5 hours. This data was developed using the same antibody clone with 82732-5-PBS in a different storage buffer formulation.



1×10^6 A549 cells were intracellularly stained with 0.25 ug SERPINE2 Recombinant antibody (82732-5-RR, Clone:5O16) and CoraLite®488-Conjugated AffiniPure Goat Anti-Rabbit IgG(H+L) (SA00013-2)(red), or 0.25 ug Rabbit IgG control Rabbit PolyAb (30000-0-AP) (blue). Cells were fixed with 4% PFA and permeabilized with Flow Cytometry Perm Buffer (PF00011-C). This data was developed using the same antibody clone with 82732-5-PBS in a different storage buffer formulation.



Biolayer interferometry (BLI) kinetic assays of 82732-5-RR against Human SERPINE2 were performed. The affinity constant is below 1 pM.