

For Research Use Only

# SERPINE2 Recombinant antibody

Catalog Number: 82732-5-RR



## Basic Information

<b>Catalog Number:</b> 82732-5-RR	<b>GenBank Accession Number:</b> BC015663	<b>Purification Method:</b> Protein A purification
<b>Size:</b> 1000 µg/ml	<b>GeneID (NCBI):</b> 5270	<b>CloneNo.:</b> 5016
<b>Source:</b> Rabbit	<b>UNIPROT ID:</b> P07093	<b>Recommended Dilutions:</b> WB 1:2000-1:10000
<b>Isotype:</b> IgG	<b>Full Name:</b> serpin peptidase inhibitor, clade E (nexin, plasminogen activator inhibitor type 1), member 2	
<b>Immunogen Catalog Number:</b> AG1830	<b>Calculated MW:</b> 44 kDa	
	<b>Observed MW:</b> 44-50 kDa	

## Applications

<b>Tested Applications:</b> WB, FC (Intra), ELISA	<b>Positive Controls:</b> WB : U-87 MG cells, C6 cells, U-251 cells, mouse brain tissue, rat brain tissue
<b>Species Specificity:</b> human, mouse, rat	

## Background Information

SERPINE2 also called protease nexin-1 or glial-derived neurite promoting factor, is a member of the serine protease inhibitor (SERPIN) superfamily. It would be a potent inhibitor of the urokinase-plasminogen activator (uPA), tissue-type PA (tPA), thrombin, trypsin, factor X<sub>ia</sub>, and prostasin. SERPINE2 is widely expressed in various tissues, including endothelial cells, fibroblasts, smooth muscle cells, tumor cells, glial cells, neurons, and placental cells.

## Storage

**Storage:**  
Store at -20°C. Stable for one year after shipment.  
**Storage Buffer:**  
PBS with 0.02% sodium azide and 50% glycerol pH 7.3.  
Aliquoting is unnecessary for -20°C storage

For technical support and original validation data for this product please contact:

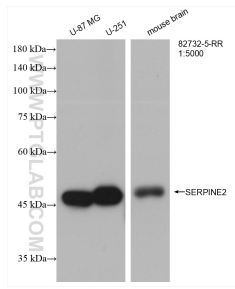
T: 4006900926

E: [Proteintech-CN@ptglab.com](mailto:Proteintech-CN@ptglab.com)

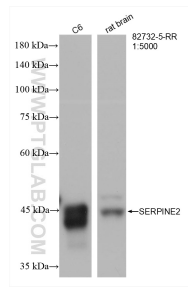
W: [ptgcn.com](http://ptgcn.com)

This product is exclusively available under Proteintech Group brand and is not available to purchase from any other manufacturer.

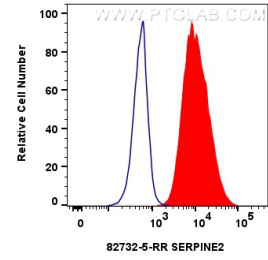
## Selected Validation Data



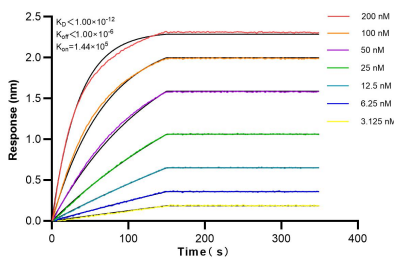
Various lysates were subjected to SDS PAGE followed by western blot with 82732-5-RR (SERPINE2 antibody) at dilution of 1:5000 incubated at room temperature for 1.5 hours.



Various lysates were subjected to SDS PAGE followed by western blot with 82732-5-RR (SERPINE2 antibody) at dilution of 1:5000 incubated at room temperature for 1.5 hours.



$1 \times 10^6$  A549 cells were intracellularly stained with 0.25  $\mu$ g SERPINE2 Recombinant antibody (82732-5-RR, Clone:5O16) and CoraLite®488-Conjugated AffiniPure Goat Anti-Rabbit IgG(H+L) (SA00013-2)(red), or 0.25  $\mu$ g Rabbit IgG control Rabbit PolyAb (30000-O-AP) (blue). Cells were fixed with 4% PFA and permeabilized with Flow Cytometry Perm Buffer (PF00011-C).



Biolayer interferometry (BLI) kinetic assays of 82732-5-RR against Human SERPINE2 were performed. The affinity constant is below 1 pM.