

For Research Use Only

MRPS16 Recombinant antibody

Catalog Number: 82741-2-RR

Featured Product



Basic Information

Catalog Number:

82741-2-RR

Size:

1000 ug/ml

Source:

Rabbit

Isotype:

IgG

Immunogen Catalog Number:

AG9749

GenBank Accession Number:

BC021106

GeneID (NCBI):

51021

UNIPROT ID:

Q9Y3D3

Full Name:

mitochondrial ribosomal protein S16

Calculated MW:

137 aa, 15 kDa

Observed MW:

15 kDa

Purification Method:

Protein A purification

CloneNo.:

11D12

Recommended Dilutions:

WB 1:5000-1:50000

IHC 1:50-1:500

Applications

Tested Applications:

WB, IHC, ELISA

Species Specificity:

human

Note-IHC: suggested antigen retrieval with TE buffer pH 9.0; (*) Alternatively, antigen retrieval may be performed with citrate buffer pH 6.0

Positive Controls:

WB : HEK-293 cells, HeLa cells, HepG2 cells, HT-1080 cells

IHC : human intrahepatic cholangiocarcinoma tissue,

Background Information

Storage

Storage:

Store at -20°C. Stable for one year after shipment.

Storage Buffer:

PBS with 0.02% sodium azide and 50% glycerol pH 7.3.

Aliquoting is unnecessary for -20°C storage

For technical support and original validation data for this product please contact:

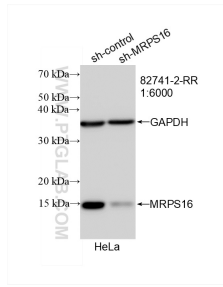
T: 4006900926

E: Proteintech-CN@ptglab.com

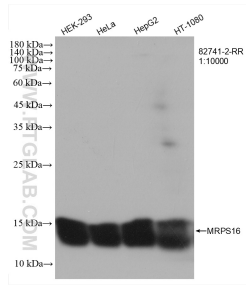
W: ptgcn.com

This product is exclusively available under Proteintech Group brand and is not available to purchase from any other manufacturer.

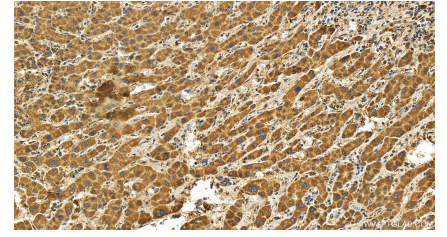
Selected Validation Data



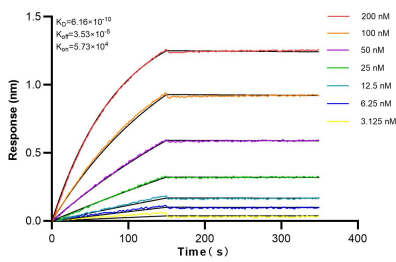
WB result of MRPS16 antibody (82741-2-RR; 1:6000; incubated at room temperature for 1.5 hours) with sh-Control and sh-MRPS16 transfected HeLa cells.



Various lysates were subjected to SDS PAGE followed by western blot with 82741-2-RR (MRPS16 antibody) at dilution of 1:10000 incubated at room temperature for 1.5 hours.



Immunohistochemical analysis of paraffin-embedded human intrahepatic cholangiocarcinoma tissue slide using 82741-2-RR (MRPS16 antibody) at dilution of 1:200 (under 20x lens). Heat mediated antigen retrieval with Tris-EDTA buffer (pH 9.0).



Biolayer interferometry (BLI) kinetic assays of 82741-2-RR against Human MRPS16 were performed. The affinity constant is 0.616 nM.