

For Research Use Only

# Lamin B2 Recombinant antibody, PBS Only



Catalog Number: 82801-3-PBS

## Basic Information

<b>Catalog Number:</b> 82801-3-PBS	<b>GenBank Accession Number:</b> BC006551	<b>Purification Method:</b> Protein A purification
<b>Size:</b> 1mg/ml	<b>GeneID (NCBI):</b> 84823	<b>CloneNo.:</b> 230184G4
<b>Source:</b> Rabbit	<b>UNIPROT ID:</b> Q03252	
<b>Isotype:</b> IgG	<b>Full Name:</b> lamin B2	
<b>Immunogen Catalog Number:</b> AG1335	<b>Calculated MW:</b> 68 kDa	

## Applications

**Tested Applications:**  
IF, Indirect ELISA

**Species Specificity:**  
Human

## Background Information

Lamins are nuclear membrane structural components that are important in structural integrity of the nucleus and may also interact with chromatin (PMID: 33033404). Research studies show that lamin B2 knockout mice exhibit neuronal developmental defects and that both proteins are essential for typical brain development (PMID: 20145110). Mutations in Lamin B2 can result in a susceptibility to developing acquired partial lipodystrophy, a rare disorder characterized by the progressive loss of subcutaneous fat in a bilaterally symmetrical fashion (PMID: 16826530).

## Storage

**Storage:**  
Store at -80°C.

**Storage Buffer:**  
PBS Only

For technical support and original validation data for this product please contact:

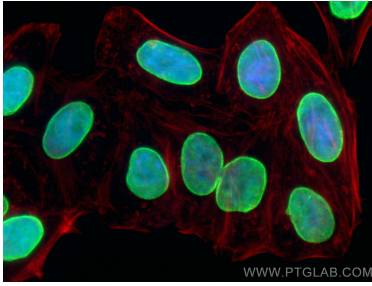
T: 4006900926

E: [Proteintech-CN@ptglab.com](mailto:Proteintech-CN@ptglab.com)

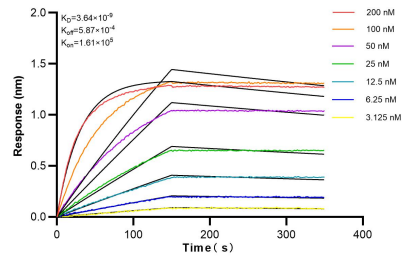
W: [ptgcn.com](http://ptgcn.com)

**This product is exclusively available under Proteintech Group brand and is not available to purchase from any other manufacturer.**

## Selected Validation Data



Immunofluorescent analysis of (4% PFA) fixed HepG2 cells using Lamin B2 antibody (82801-3-RR, Clone: 230184G4) at dilution of 1:800 and CoraLite®488-Conjugated AffiniPure Goat Anti-Rabbit IgG(H+L) (SA00013-2), CL594-phalloidin (red). This data was developed using the same antibody clone with 82801-3-PBS in a different storage buffer formulation.



Bilayer interferometry (BLI) kinetic assays of 82801-3-RR against Human Lamin B2 were performed. The affinity constant is 3.64 nM.