

For Research Use Only

Lamin B2 Recombinant antibody

Catalog Number: 82801-3-RR



Basic Information

Catalog Number: 82801-3-RR	GenBank Accession Number: BC006551	Purification Method: Protein A purification
Size: 800 µg/ml	GeneID (NCBI): 84823	CloneNo.: 230184G4
Source: Rabbit	UNIPROT ID: Q03252	Recommended Dilutions: IF 1:400-1:1600
Isotype: IgG	Full Name: lamin B2	
Immunogen Catalog Number: AG1335	Calculated MW: 68 kDa	

Applications

Tested Applications: IF/ICC, ELISA	Positive Controls: IF : HepG2 cells,
Species Specificity: Human	

Background Information

Lamins are nuclear membrane structural components that are important in structural integrity of the nucleus and may also interact with chromatin (PMID: 33033404). Research studies show that lamin B2 knockout mice exhibit neuronal developmental defects and that both proteins are essential for typical brain development (PMID: 20145110). Mutations in Lamin B2 can result in a susceptibility to developing acquired partial lipodystrophy, a rare disorder characterized by the progressive loss of subcutaneous fat in a bilaterally symmetrical fashion (PMID: 16826530).

Storage

Storage:
Store at -20°C. Stable for one year after shipment.
Storage Buffer:
PBS with 0.02% sodium azide and 50% glycerol pH 7.3.
Aliquoting is unnecessary for -20°C storage

For technical support and original validation data for this product please contact:

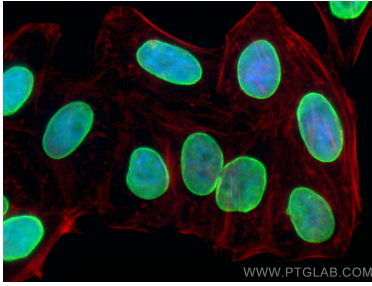
T: 4006900926

E: Proteintech-CN@ptglab.com

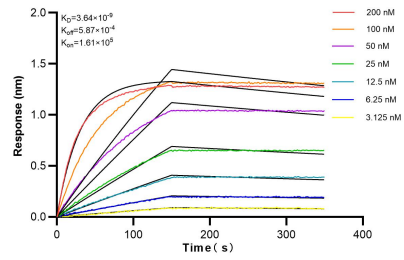
W: ptgcn.com

This product is exclusively available under Proteintech Group brand and is not available to purchase from any other manufacturer.

Selected Validation Data



Immunofluorescent analysis of (4% PFA) fixed HepG2 cells using Lamin B2 antibody (82801-3-RR, Clone: 230184G4) at dilution of 1:800 and CoraLite®488-Conjugated AffiniPure Goat Anti-Rabbit IgG(H+L) (SA00013-2), CL594-phalloidin (red).



Biolayer interferometry (BLI) kinetic assays of 82801-3-RR against Human Lamin B2 were performed. The affinity constant is 3.64 nM.