

For Research Use Only

RPL3 Recombinant antibody, PBS Only



Catalog Number: 82815-1-PBS

Basic Information

Catalog Number: 82815-1-PBS	GenBank Accession Number: BC012786	Purification Method: Protein A purification
Size: 1mg/ml	GeneID (NCBI): 6122	CloneNo.: 3P18
Source: Rabbit	UNIPROT ID: P39023	
Isotype: IgG	Full Name: ribosomal protein L3	
Immunogen Catalog Number: AG1436	Calculated MW: 46/27 kDa	

Applications

Tested Applications:
IF, Indirect ELISA

Species Specificity:
Human

Background Information

Ribosomes, the complexes that catalyze protein synthesis, consist of a small 40S subunit and a large 60S subunit. Together these subunits are composed of 4 RNA species and approximately 80 structurally distinct proteins. RPL3, also named as TARBP-B and MGC104284, belongs to the ribosomal protein L3P family. This protein is a component of the 60S subunit. It can bind to the HIV-1 TAR mRNA, and it has been suggested that the protein contributes to tat-mediated transactivation. As is typical for genes encoding ribosomal proteins, there are multiple processed pseudogenes of this gene dispersed through the genome.

Storage

Storage:
Store at -80°C.
The product is shipped with ice packs. Upon receipt, store it immediately at -80°C

Storage Buffer:
PBS Only

For technical support and original validation data for this product please contact:

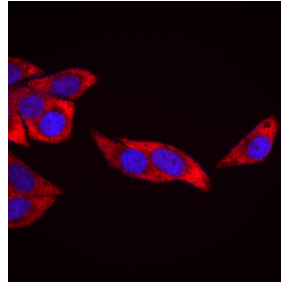
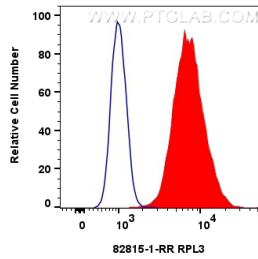
T: 4006900926

E: Proteintech-CN@ptglab.com

W: ptgcn.com

This product is exclusively available under Proteintech Group brand and is not available to purchase from any other manufacturer.

Selected Validation Data



1x10⁶ HepG2 cells were intracellularly stained with 0.25 ug RPL3 Recombinant antibody (82815-1-RR, Clone:3P18) and CoraLite®488-Conjugated AffiniPure Goat Anti-Rabbit IgG(H+L) (SA00013-2) (red), or 0.25 ug Isotype Control (blue). Cells were fixed with 4% PFA and permeabilized with Flow Cytometry Perm Buffer (PF00011-C). This data was developed using the same antibody clone with 82815-1-PBS in a different storage buffer formulation.

Immunofluorescent analysis of (4% PFA) fixed HepG2 cells using RPL3 antibody (82815-1-RR, Clone: 3P18) at dilution of 1:240 and Multi-rAb CoraLite ® Plus 594-Goat Anti-Rabbit Recombinant Secondary Antibody (H+L) (RGAR004). This data was developed using the same antibody clone with 82815-1-PBS in a different storage buffer formulation.