

For Research Use Only

RPL3 Recombinant antibody

Catalog Number: 82815-1-RR



Basic Information

Catalog Number: 82815-1-RR	GenBank Accession Number: BC012786	Purification Method: Protein A purification
Size: 250 µg/ml	GeneID (NCBI): 6122	CloneNo.: 3P18
Source: Rabbit	UNIPROT ID: P39023	Recommended Dilutions: IF/ICC 1:120-1:480
Isotype: IgG	Full Name: ribosomal protein L3	
Immunogen Catalog Number: AG1436	Calculated MW: 46/27 kDa	

Applications

Tested Applications: IF/ICC, ELISA, FC (Intra)	Positive Controls: IF/ICC : HepG2 cells,
Species Specificity: Human	

Background Information

Ribosomes, the complexes that catalyze protein synthesis, consist of a small 40S subunit and a large 60S subunit. Together these subunits are composed of 4 RNA species and approximately 80 structurally distinct proteins. RPL3, also named as TARBP-B and MGC104284, belongs to the ribosomal protein L3P family. This protein is a component of the 60S subunit. It can bind to the HIV-1 TAR mRNA, and it has been suggested that the protein contributes to tat-mediated transactivation. As is typical for genes encoding ribosomal proteins, there are multiple processed pseudogenes of this gene dispersed through the genome.

Storage

Storage:
Store at -20°C. Stable for one year after shipment.
Storage Buffer:
PBS with 0.02% sodium azide and 50% glycerol pH 7.3.
Aliquoting is unnecessary for -20°C storage

For technical support and original validation data for this product please contact:

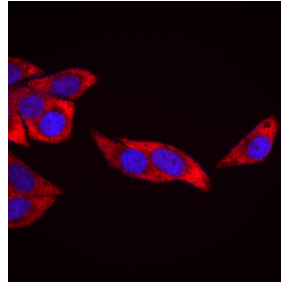
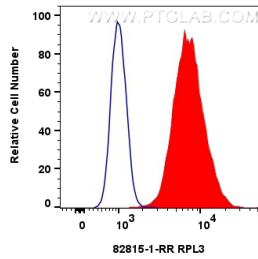
T: 4006900926

E: Proteintech-CN@ptglab.com

W: ptgcn.com

This product is exclusively available under Proteintech Group brand and is not available to purchase from any other manufacturer.

Selected Validation Data



1x10⁶ HepG2 cells were intracellularly stained with 0.25 ug RPL3 Recombinant antibody (82815-1-RR, Clone:3P18) and CoraLite@488-Conjugated AffiniPure Goat Anti-Rabbit IgG(H+L) (SA00013-2) (red), or 0.25 ug Isotype Control (blue). Cells were fixed with 4% PFA and permeabilized with Flow Cytometry Perm Buffer (PF00011-C).

Immunofluorescent analysis of (4% PFA) fixed HepG2 cells using RPL3 antibody (82815-1-RR, Clone: 3P18) at dilution of 1:240 and Multi-rAb CoraLite ® Plus 594-Goat Anti-Rabbit Recombinant Secondary Antibody (H+L) (RGAR004).