

For Research Use Only

# H6PD Recombinant antibody

Catalog Number: 82819-2-RR



## Basic Information

<b>Catalog Number:</b> 82819-2-RR	<b>GenBank Accession Number:</b> BC081559	<b>Purification Method:</b> Protein A purification
<b>Size:</b> 1000 µg/ml	<b>GeneID (NCBI):</b> 9563	<b>CloneNo.:</b> 3C14
<b>Source:</b> Rabbit	<b>UNIPROT ID:</b> O95479	<b>Recommended Dilutions:</b> WB 1:5000-1:50000
<b>Isotype:</b> IgG	<b>Full Name:</b> hexose-6-phosphate dehydrogenase (glucose 1-dehydrogenase)	
<b>Immunogen Catalog Number:</b> AG7109	<b>Calculated MW:</b> 89 kDa	
	<b>Observed MW:</b> 89-95 kDa	

## Applications

<b>Tested Applications:</b> WB, ELISA	<b>Positive Controls:</b> WB : HepG2 cells, rat liver tissue
<b>Species Specificity:</b> Human, rat	

## Background Information

Hexose-6-phosphate dehydrogenase (H6PD) is also named as GDH,6PGL. It is the main NADPH generating enzyme in the lumen of the endoplasmic reticulum. H6PD is regarded as an ancillary enzyme in prereceptorial glucocorticoid activation and probably acts as a nutrient sensor and as a prosurvival factor (PMID:21620971). H6PD is a glycoprotein and has been shown tissue differences in glycosylation status might explain both the difference in migration on SDS-PAGE gels as well as in activity. Defects in H6PD are a cause of cortisone reductase deficiency (CRD).

## Storage

**Storage:**  
Store at -20°C. Stable for one year after shipment.  
**Storage Buffer:**  
PBS with 0.02% sodium azide and 50% glycerol pH 7.3.  
Aliquoting is unnecessary for -20°C storage

For technical support and original validation data for this product please contact:

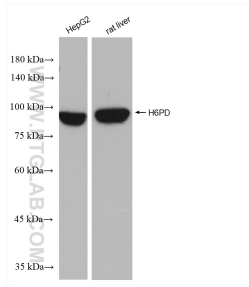
T: 4006900926

E: [Proteintech-CN@ptglab.com](mailto:Proteintech-CN@ptglab.com)

W: [ptgcn.com](http://ptgcn.com)

**This product is exclusively available under Proteintech Group brand and is not available to purchase from any other manufacturer.**

## Selected Validation Data



Various lysates were subjected to SDS PAGE followed by western blot with 82819-2-RR (H6PD antibody) at dilution of 1:10000 incubated at room temperature for 1.5 hours.