

For Research Use Only

# CLOCK Recombinant antibody, PBS Only



Catalog Number: 82829-1-PBS

## Basic Information

<b>Catalog Number:</b> 82829-1-PBS	<b>GenBank Accession Number:</b> BC041878	<b>Purification Method:</b> Protein A purification
<b>Size:</b> 1mg/ml	<b>GeneID (NCBI):</b> 9575	<b>CloneNo.:</b> 1123
<b>Source:</b> Rabbit	<b>UNIPROT ID:</b> O15516	
<b>Isotype:</b> IgG	<b>Full Name:</b> clock homolog (mouse)	
<b>Immunogen Catalog Number:</b> AG30011	<b>Calculated MW:</b> 846 aa, 95 kDa	
	<b>Observed MW:</b> 110 kDa	

## Applications

**Tested Applications:**  
WB, IHC, Indirect ELISA

**Species Specificity:**  
Human, mouse, rat

## Background Information

Circadian locomotor output cycles protein kaput (CLOCK), also named as BHLHE8 or KIAA0334, is a 846 amino acid protein, which contains one bHLH domain, one PAC domain, and two PAS domains. CLOCK localizes in the nucleus and cytoplasm. CLOCK is expressed in all tissues examined including spleen, thymus, prostate, testis, ovary, small intestine, colon, leukocytes, heart, brain, placenta, lung, liver, skeletal muscle, kidney and pancreas. ARNTL/2-CLOCK heterodimers activate E-box element (5'-CACGTG-3') transcription of a number of proteins of the circadian clock, such as PER1 and PER2. The calculated molecular weight of CLOCK is 95kDa, we detected a 95-110 kDa protein by western blot. Our result is similar to the result of reseach paper (PMID: 30683868).

## Storage

**Storage:**  
Store at -80°C.  
**The product is shipped with ice packs. Upon receipt, store it immediately at -80°C**

**Storage Buffer:**  
PBS Only

For technical support and original validation data for this product please contact:

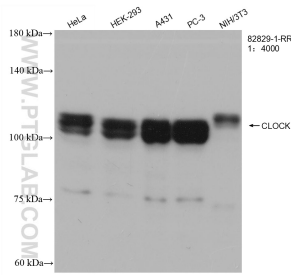
T: 4006900926

E: Proteintech-CN@ptglab.com

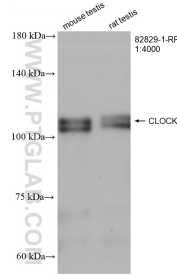
W: ptgcn.com

**This product is exclusively available under Proteintech Group brand and is not available to purchase from any other manufacturer.**

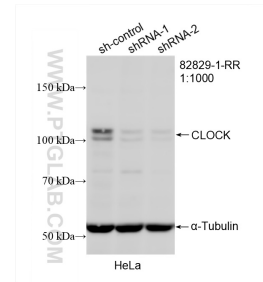
## Selected Validation Data



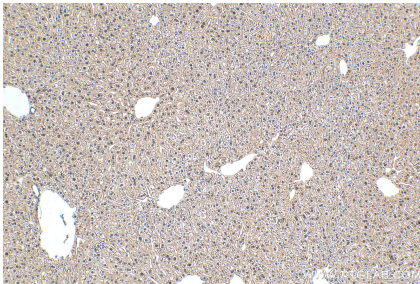
Various lysates were subjected to SDS PAGE followed by western blot with 82829-1-RR (CLOCK antibody) at dilution of 1:4000 incubated at room temperature for 1.5 hours. This data was developed using the same antibody clone with 82829-1-PBS in a different storage buffer formulation.



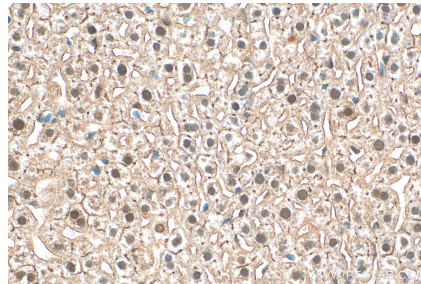
Various lysates were subjected to SDS PAGE followed by western blot with 82829-1-RR (CLOCK antibody) at dilution of 1:4000 incubated at room temperature for 1.5 hours. This data was developed using the same antibody clone with 82829-1-PBS in a different storage buffer formulation.



WB result of CLOCK antibody (82829-1-RR; 1:1000; incubated at room temperature for 1.5 hours) with sh-Control and sh-CLOCK transfected HeLa cells. This data was developed using the same antibody clone with 82829-1-PBS in a different storage buffer formulation.



Immunohistochemical analysis of paraffin-embedded mouse liver tissue slide using 82829-1-RR (CLOCK antibody) at dilution of 1:400 (under 10x lens). Heat mediated antigen retrieval with Tris-EDTA buffer (pH 9.0). This data was developed using the same antibody clone with 82829-1-PBS in a different storage buffer formulation.



Immunohistochemical analysis of paraffin-embedded mouse liver tissue slide using 82829-1-RR (CLOCK antibody) at dilution of 1:400 (under 40x lens). Heat mediated antigen retrieval with Tris-EDTA buffer (pH 9.0). This data was developed using the same antibody clone with 82829-1-PBS in a different storage buffer formulation.