

For Research Use Only

# NGAL Recombinant antibody, PBS Only (Detector)

Catalog Number: 82841-2-PBS



## Basic Information

<b>Catalog Number:</b> 82841-2-PBS	<b>GenBank Accession Number:</b> NP_005555.2	<b>Purification Method:</b> Protein A purification
<b>Size:</b> 1mg/ml	<b>GeneID (NCBI):</b> 3934	<b>CloneNo.:</b> 2L8
<b>Source:</b> Rabbit	<b>UNIPROT ID:</b> P80188	
<b>Isotype:</b> IgG	<b>Full Name:</b> lipocalin 2	
	<b>Calculated MW:</b> 23kd	

## Applications

**Tested Applications:**  
Sandwich ELISA, Indirect ELISA, Sample test

**Species Specificity:**  
human

## Background Information

### Storage

**Storage:**  
Store at -80°C.  
**The product is shipped with ice packs. Upon receipt, store it immediately at -80°C**

**Storage Buffer:**  
PBS Only

For technical support and original validation data for this product please contact:

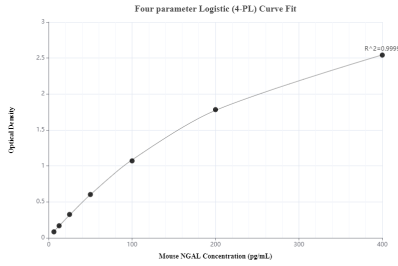
T: 4006900926

E: Proteintech-CN@ptglab.com

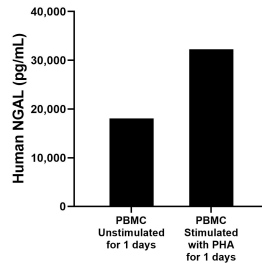
W: ptgcn.com

**This product is exclusively available under Proteintech Group brand and is not available to purchase from any other manufacturer.**

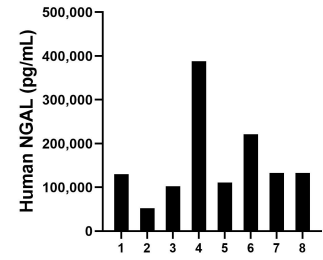
## Selected Validation Data



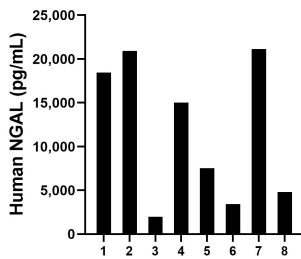
Sandwich ELISA standard curve of MP00770-1, NGAL Recombinant Matched Antibody Pair - PBS only. 82841-9-PBS was coated to a plate as the capture antibody and incubated with serial dilutions of standard Eg0268. 82841-2-PBS was HRP conjugated as the detection antibody. Range: 19.5-1250 pg/mL



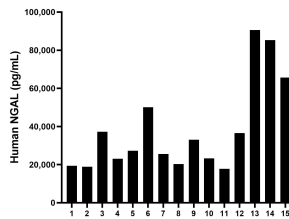
Human peripheral blood mononuclear cells (PBMC) were cultured unstimulated or stimulated with  $10 \mu\text{g/mL}$  PHA for 1 days. The mean NGAL concentration was determined to be 18,080.8 pg/mL in unstimulated PBMC supernatant, 32,268.8 pg/mL in PHA stimulated PBMC supernatant.



Saliva of eight individual healthy human donors was measured. The NGAL concentration of detected samples was determined to be 158,732.5 pg/mL with a range of 52,136.9 - 388,400.2 pg/mL.



Urine of eight individual healthy human donors was measured. The NGAL concentration of detected samples was determined to be 11,654.6 pg/mL with a range of 1,964.2 - 21,150.4 pg/mL.



Plasma of fifteen individual healthy human donors was measured. The NGAL concentration of detected samples was determined to be 38,260.8 pg/mL with a range of 17,778.7 - 90,593.8 pg/mL.