

For Research Use Only

# Mouse Mmp9 Recombinant antibody, PBS Only (Capture)



Catalog Number:82854-7-PBS

## Basic Information

<b>Catalog Number:</b> 82854-7-PBS	<b>GenBank Accession Number:</b> NM_013599	<b>Purification Method:</b> Protein A purification
<b>Size:</b> 1mg/ml	<b>GeneID (NCBI):</b> 17395	<b>CloneNo.:</b> 230069E11
<b>Source:</b> Rabbit	<b>UNIPROT ID:</b> P41245-1	
<b>Isotype:</b> IgG	<b>Full Name:</b> matrix metalloproteinase 9	
	<b>Calculated MW:</b> 81kd	

## Applications

**Tested Applications:**  
Sandwich ELISA, Indirect ELISA, Sample test

**Species Specificity:**  
mouse

## Background Information

### Storage

**Storage:**  
Store at -80°C.  
**The product is shipped with ice packs. Upon receipt, store it immediately at -80°C**

**Storage Buffer:**  
PBS Only

For technical support and original validation data for this product please contact:

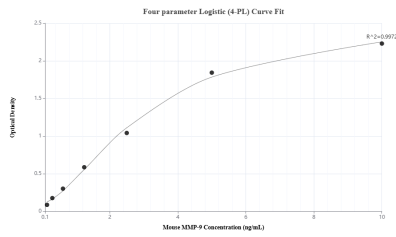
T: 4006900926

E: [Proteintech-CN@ptglab.com](mailto:Proteintech-CN@ptglab.com)

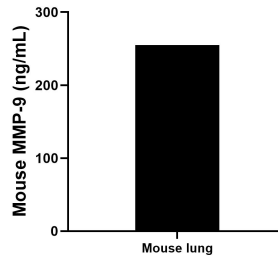
W: [ptgcn.com](http://ptgcn.com)

**This product is exclusively available under Proteintech Group brand and is not available to purchase from any other manufacturer.**

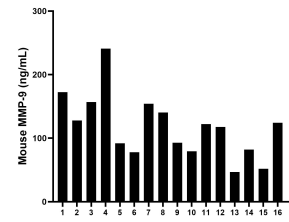
## Selected Validation Data



Sandwich ELISA standard curve of MP00776-1, Mouse MMP-9 Recombinant Matched Antibody Pair - PBS only. 82854-7-PBS was coated to a plate as the capture antibody and incubated with serial dilutions of standard Eg0452. 82854-6-PBS was HRP conjugated as the detection antibody. Range: 0.16-10 ng/mL.



Mouse lung tissue (3 lungs in 1-2 mm pieces in 100 mL of medium) was cultured for 6 days in RPMI supplemented with 10% fetal bovine serum, 50  $\mu$  M  $\beta$ -mercaptoethanol, 2 mM L-glutamine, 100 U/mL penicillin, and 100  $\mu$  g/mL streptomycin sulfate. An aliquot of the cell culture supernatant was removed, assayed for mouse Total MMP-9, and measured 255.0 ng/mL.



Serum of eight mice was measured. The Mouse MMP-9 concentration of detected samples was determined to be 117.52 ng/mL with a range of 46.86 - 240.93 ng/mL.