

For Research Use Only

TLN1 Recombinant antibody, PBS Only (Detector)

Catalog Number: 82856-15-PBS



Basic Information

Catalog Number: 82856-15-PBS	GenBank Accession Number: BC042923	Purification Method: Protein A purification
Size: 1 mg/ml	GeneID (NCBI): 7094	CloneNo.: 240294F4
Source: Rabbit	UNIPROT ID: Q9Y490	
Isotype: IgG	Full Name: talin 1	
Immunogen Catalog Number: AG5367	Calculated MW: 2541 aa, 270 kDa	

Applications

Tested Applications:
Cytometric bead array, Sandwich ELISA, Indirect ELISA,
Sample test

Species Specificity:
human

Background Information

Storage

Storage:
Store at -80°C.
The product is shipped with ice packs. Upon receipt, store it immediately at -80°C

Storage Buffer:
PBS Only

For technical support and original validation data for this product please contact:

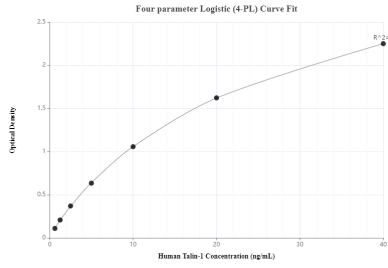
T: 4006900926

E: Proteintech-CN@ptglab.com

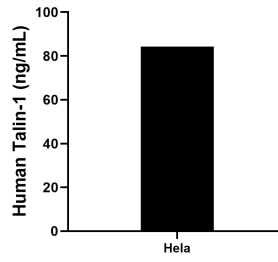
W: ptgcn.com

This product is exclusively available under Proteintech Group brand and is not available to purchase from any other manufacturer.

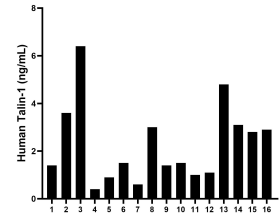
Selected Validation Data



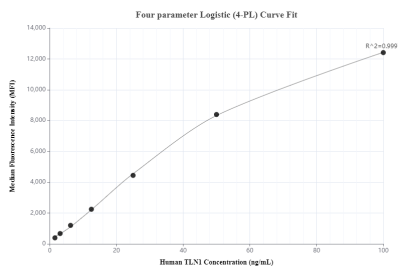
Sandwich ELISA standard curve of MP00405-4, human Talin-1 Recombinant Matched Antibody Pair - PBS only. 82856-19-PBS was coated to a plate as the capture antibody and incubated with serial dilutions of standard Ag5367. 82856-15-PBS was HRP conjugated as the detection antibody. Range: 0.625-40 ng/mL



The mean Talin-1 concentration was determined to be 84.3 ng/mL in HeLa cell extract based on a 3.1 mg/mL extract load.



Serum of sixteen individual healthy human donors was measured. The Talin-1 concentration of detected samples was determined to be 2.3 ng/mL with a range of 0.4 - 6.4 ng/mL.



Cytometric bead array standard curve of MP00405-3, Talin-1 Recombinant Matched Antibody Pair, PBS Only. Capture antibody: 82856-16-PBS. Detection antibody: 82856-15-PBS. Standard: Ag5367. Range: 1.56-100 ng/mL