

For Research Use Only

# APOE6 Recombinant antibody, PBS Only



Catalog Number: 82877-2-PBS

## Basic Information

<b>Catalog Number:</b> 82877-2-PBS	<b>GenBank Accession Number:</b> BC038950	<b>Purification Method:</b> Protein A purification
<b>Size:</b> 1mg/ml	<b>GeneID (NCBI):</b> 80830	<b>CloneNo.:</b> 230162E11
<b>Source:</b> Rabbit	<b>UNIPROT ID:</b> Q9BWW8	
<b>Isotype:</b> IgG	<b>Full Name:</b> apolipoprotein L, 6	
<b>Immunogen Catalog Number:</b> AG24430	<b>Calculated MW:</b> 38 kDa	

## Applications

**Tested Applications:**  
IF, Indirect ELISA

**Species Specificity:**  
Human

## Background Information

### Storage

**Storage:**  
Store at -80°C.

**Storage Buffer:**  
PBS Only

For technical support and original validation data for this product please contact:

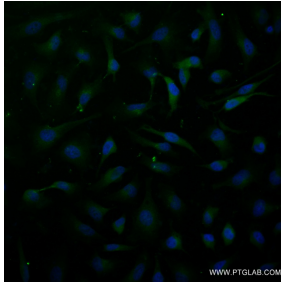
T: 4006900926

E: [Proteintech-CN@ptglab.com](mailto:Proteintech-CN@ptglab.com)

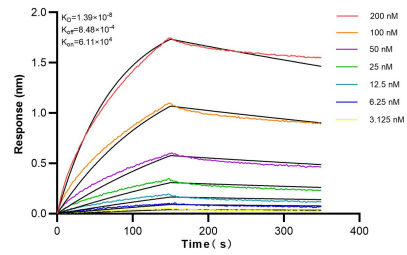
W: [ptgcn.com](http://ptgcn.com)

This product is exclusively available under Proteintech Group brand and is not available to purchase from any other manufacturer.

## Selected Validation Data



Immunofluorescent analysis of (4% PFA) fixed HeLa cells using APOL6 antibody (82877-2-RR, Clone: 230162E11) at dilution of 1:250 and CoraLite®488-Conjugated AffiniPure Goat Anti-Mouse IgG(H+L) (SA00013-1). This data was developed using the same antibody clone with 82877-2-PBS in a different storage buffer formulation.



Biolayer interferometry (BLI) kinetic assays of 82877-2-RR against Human APOL6 were performed. The affinity constant is 13.8 nM.