

For Research Use Only

IFT88 Recombinant antibody, PBS Only



Catalog Number: 82886-1-PBS

Basic Information

Catalog Number: 82886-1-PBS	GenBank Accession Number: BC030776	Purification Method: Protein A purification
Size: 1 mg/ml	GeneID (NCBI): 8100	CloneNo.: 230074F8
Source: Rabbit	UNIPROT ID: Q13099	
Isotype: IgG	Full Name: intraflagellar transport 88 homolog (Chlamydomonas)	
Immunogen Catalog Number: AG4980	Calculated MW: 94 kDa	
	Observed MW: 94 kDa	

Applications

Tested Applications:
WB, IHC, Indirect ELISA

Species Specificity:
Human, mouse, rat

Background Information

Intraflagellar transport (IFT), mediated by molecular motors and IFT particles, is an important transport process that occurs in the cilium and has been shown to be essential for the assembly and maintenance of cilia and flagella in many organisms. IFT88 (intraflagellar transport protein 88; also known as TG737 or TTC10) is a component of IFT particles and required for cilium biogenesis. Defects in IFT88/TG737 lead to polycystic kidney disease (11062270). IFT88 localizes to spindle poles during mitosis and is required for spindle orientation in mitosis (21441926). This antibody was raised against the C-terminal region of human IFT88 and can detect the endogenous level of IFT88.

Storage

Storage:
Store at -80°C.
The product is shipped with ice packs. Upon receipt, store it immediately at -80°C

Storage Buffer:
PBS Only

For technical support and original validation data for this product please contact:

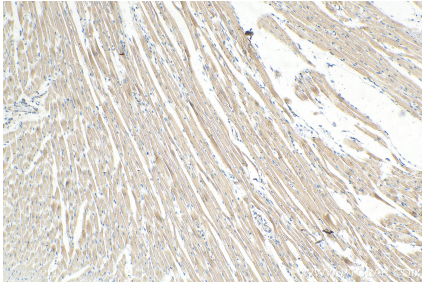
T: 4006900926

E: Proteintech-CN@ptglab.com

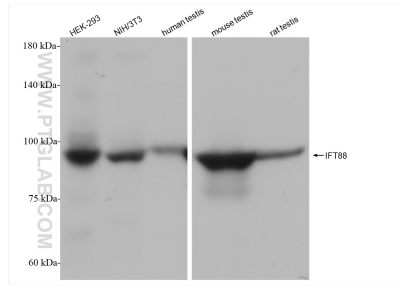
W: ptgcn.com

This product is exclusively available under Proteintech Group brand and is not available to purchase from any other manufacturer.

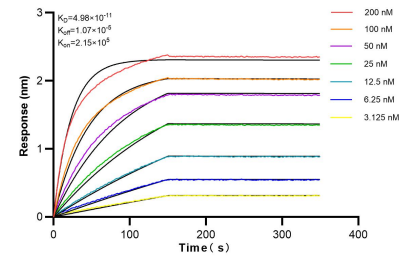
Selected Validation Data



Immunohistochemical analysis of paraffin-embedded mouse heart tissue slide using 82886-1-RR (IFT88 antibody) at dilution of 1:500 (under 10x lens). Heat mediated antigen retrieval with Tris-EDTA buffer (pH 9.0). This data was developed using the same antibody clone with 82886-1-PBS in a different storage buffer formulation.



Various lysates were subjected to SDS PAGE followed by western blot with 82886-1-RR (IFT88 antibody) at dilution of 1:5000 incubated at room temperature for 1.5 hours. This data was developed using the same antibody clone with 82886-1-PBS in a different storage buffer formulation.



Bi-layer interferometry (BLI) kinetic assays of 82886-1-RR against Human IFT88 were performed. The affinity constant is 49.8 pM.